



WOOLPERT

Warren County GIS GPS Control Network

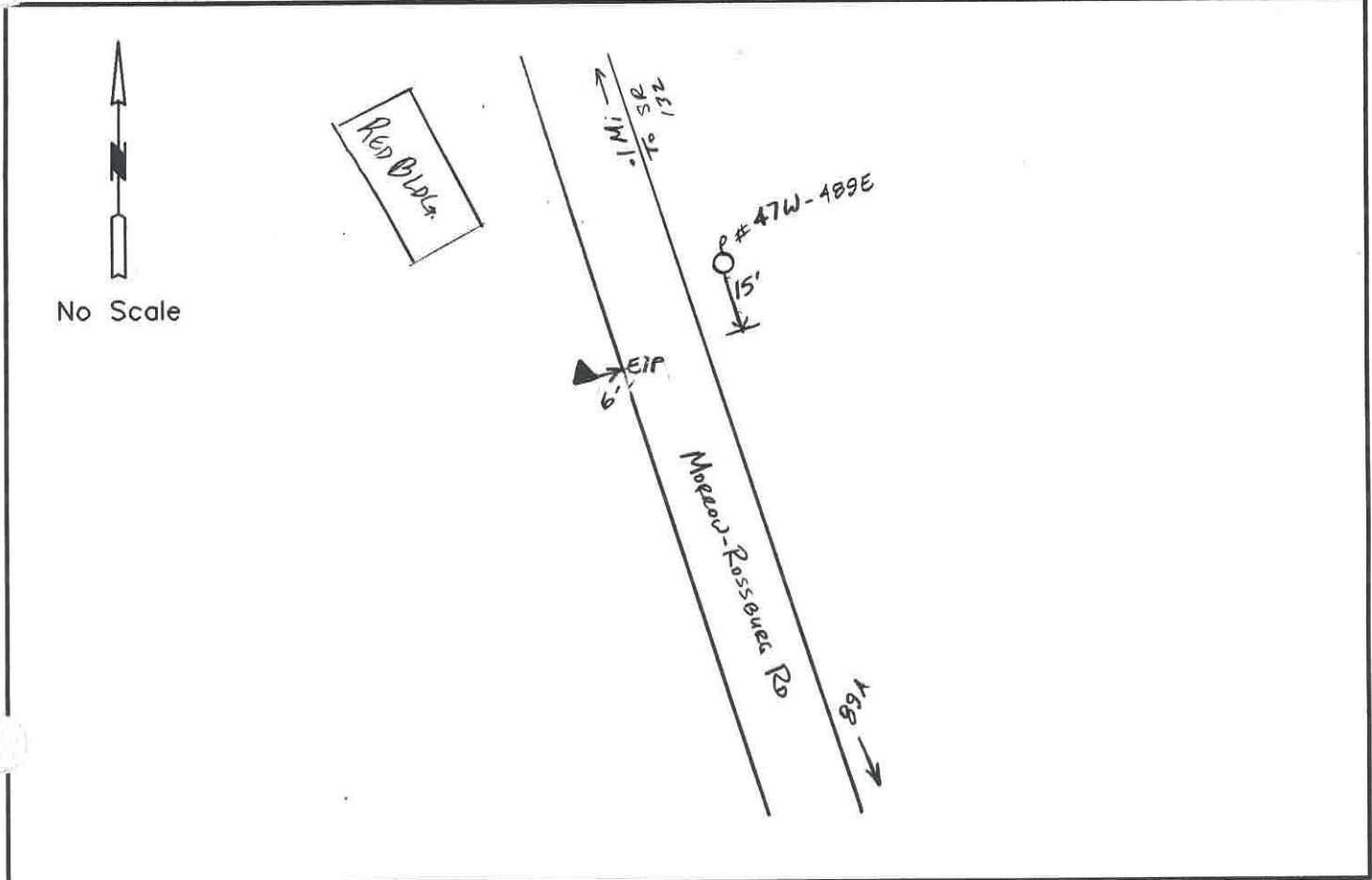
Control Monument Information Sheet



<i>Township</i> HARLAN	<i>Station Description</i> The station is located 0.1 mi. south of the intersection of SR 132 and Morrow-Rossburg Road and is on the west side of Morrow-Rossburg Road. The station is a concrete monument with an aluminium disk, set +/- 0.2ft. below grade and is stamped WARREN CO. GIS, GPS 89, 1995.			<i>Station Designation</i> 89
<i>Locality/County</i> WARREN				<i>Stamping on Mark</i> WARREN CO. GIS GPS 89, 1995
<i>Date, Set or Found</i> JUNE 1995 SET	<i>Latitude</i> N39° 17'33.23725"	<i>Longitude</i> W84° 05'54.71673"	<i>Horizontal Datum</i> NAD 83	<i>State Plane Zone</i> OHS3402
	<i>Northing</i> 474776.862 (US survey ft.)	<i>Easting</i> 1516115.163 (US survey ft.)	<i>Elevation</i> 870.002 (US survey ft.)	<i>Vertical Datum</i> NAVD 88
<i>Crew Chief</i> T. MOCHTY	<i>Convergence</i> -1° 0'51.480194"	<i>Back Station I.D.</i>	<i>Grid Azimuth & Distance to back station</i>	
<i>Established by Agency</i> WOOLPERT	<i>Scale Factor</i> .99993720	<i>Ahead Station I.D.</i> 89A	<i>Grid Azimuth & Distance to ahead station</i> 147° 49'5.578" 1236.4(feet)	

Ohio Professional Surveyor
in charge of monumentation THOMAS F. MOCHTY

Oh. Registration No.
*7682





WOOLPERT

Warren County GIS GPS Control Network

Control Monument Information Sheet



<i>Township</i> HARLAN	<i>Station Description</i> The station is located 0.3 mi. south of the intersection of SR 132 and Morrow-Rossburg Road and is on the east side of Morrow-Rossburg Road just north of the drive to #9400. The station is a concrete monument with an aluminium disk, set +/- 0.2ft. below grade and is stamped WARREN CO. GIS, GPS 89A, 1995.			<i>Station Designation</i> 89A
<i>Locality/County</i> WARREN				<i>Stamping on Mark</i> WARREN CO. GIS GPS 89A, 1995
<i>Date, Set or Found</i> JUNE 1995 SET	<i>Latitude</i> N39° 17'23"	<i>Longitude</i> W84° 05'46"	<i>Horizontal Datum</i> NAD 83	<i>State Plane Zone</i> OHS3402
	<i>Northing</i> (US survey ft.)	<i>Easting</i> (US survey ft.)	<i>Elevation</i> (US survey ft.)	<i>Vertical Datum</i> NAVD 88
<i>Crew Chief</i> T. MOCHTY	<i>Convergence</i>	<i>Back Station I.D.</i> 89	<i>Grid Azimuth & Distance to back station</i> 327° 49'5.578" 1236.4(feet)	
<i>Established by Agency</i> WOOLPERT	<i>Scale Factor</i>	<i>Ahead Station I.D.</i>	<i>Grid Azimuth & Distance to ahead station</i>	

Ohio Professional Surveyor
charge of monumentation

THOMAS F. MOCHTY

Oh. Registration No.
#7682



No Scale

