



WOOLPERT

Warren County GIS GPS Control Network

Control Monument Information Sheet

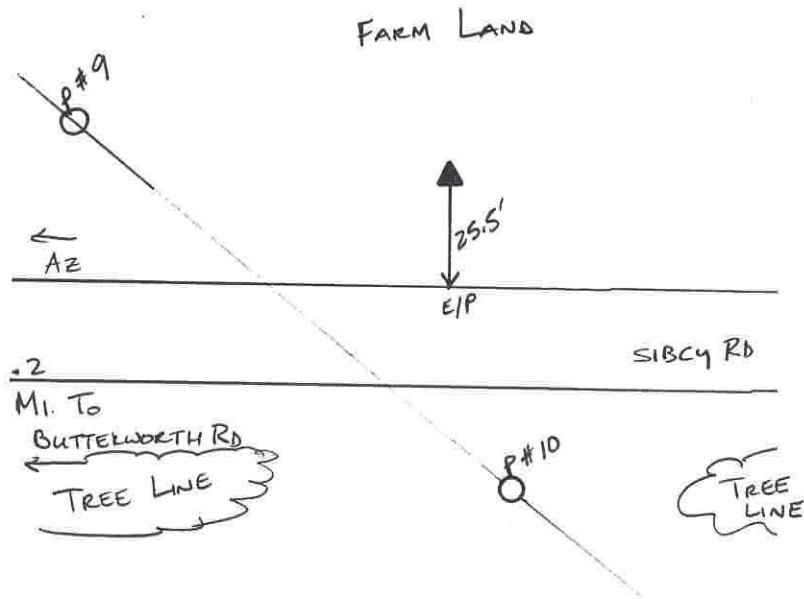


<i>Township</i> HAMILTON	<i>Station Description</i> The station is located 0.28 mi. east of the intersection of Butterworth Road and Sibcy Road and is on the north side of Sibcy Road. The station is a concrete monument with an aluminium disk, set +/- 0.2ft. below grade and is stamped WARREN CO. GIS, GPS 39, 1995.			<i>Station Designation</i> 39
<i>Locality/County</i> WARREN				<i>Stamping on Mark</i> WARREN CO. GIS GPS 39, 1995
<i>Date, Set or Found</i> JUNE 1995 SET	<i>Latitude</i> N39° 18'11.04245"	<i>Longitude</i> W84° 14'31.74678"	<i>Horizontal Datum</i> NAD 83	<i>State Plane Zone</i> OHS3402
	<i>Northing</i> 479352.814 (US survey ft.)	<i>Easting</i> 1475549.467 (US survey ft.)	<i>Elevation</i> 746.783 (US survey ft.)	<i>Vertical Datum</i> NAVD 88
<i>Crew Chief</i> T. MOCHTY	<i>Convergence</i> -1° 6'19.545862"	<i>Back Station I.D.</i>	<i>Grid Azimuth & Distance to back station</i>	
<i>Established by Agency</i> WOOLPERT	<i>Scale Factor</i> .99993690	<i>Ahead Station I.D.</i> 39A	<i>Grid Azimuth & Distance to ahead station</i> 277° 04'16.065" 1574.7(feet)	

Ohio Professional Surveyor
in charge of monumentation

THOMAS F. MOCHTY

Oh. Registration No.
*7682





WOOLPERT

Warren County GIS GPS Control Network



Control Monument Information Sheet

<i>Township</i> HAMILTON	<i>Station Description</i> The station is located northeast of the intersection of Sibcy Road and Butterworth Road. The station is a concrete monument with an aluminium disk, set +/- 0.2ft. below grade and is stamped WARREN CO. GIS, GPS 39A, 1995.			<i>Station Designation</i> 39A
<i>Locality/County</i> WARREN				<i>Stamping on Mark</i> WARREN CO. GIS GPS 39A, 1995
<i>Date, Set or Found</i> JUNE 1995 SET	<i>Latitude</i> N39° 18'12"	<i>Longitude</i> W84° 14'51"	<i>Horizontal Datum</i> NAD 83	<i>State Plane Zone</i> OHS3402
	<i>Northing</i> (US survey ft.)	<i>Easting</i> (US survey ft.)	<i>Elevation</i> (US survey ft.)	<i>Vertical Datum</i> NAVD 88
<i>Crew Chief</i> T. MOCHTY	<i>Convergence</i>	<i>Back Station I.D.</i> 39	<i>Grid Azimuth & Distance to back station</i> 97° 4'16.065" 1574.7(feet)	
<i>Established by Agency</i> WOOLPERT	<i>Scale Factor</i>	<i>Ahead Station I.D.</i>	<i>Grid Azimuth & Distance to ahead station</i>	

Ohio Professional Surveyor
charge of monumentation

THOMAS F. MOCHTY

Oh. Registration No.
*7682

