



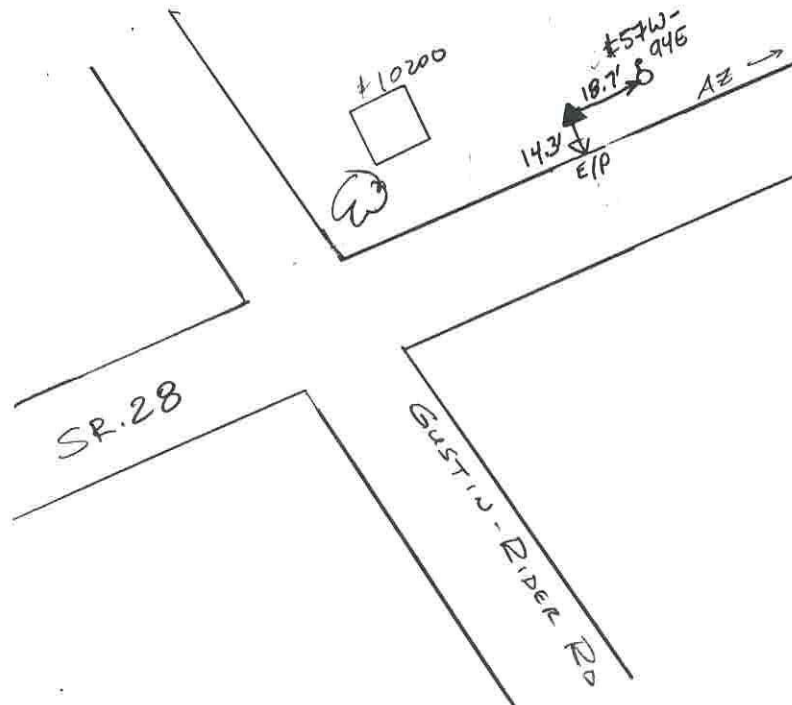
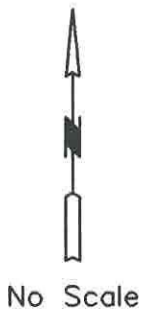
WOOLPERT

Warren County GIS GPS Control Network

Control Monument Information Sheet



<i>Township</i> HARLAN	<i>Station Description</i> The station is located +/-75' east of the intersection of Gustin Rider Road and SR 28 and is on the northwest side of SR 28. The station is a concrete monument with an aluminium disk, set +/- 0.2ft. below grade and is stamped WARREN CO. GIS, GPS 340, 1995.			<i>Station Designation</i> 340
<i>Locality/County</i> WARREN				<i>Stamping on Mark</i> WARREN CO. GIS GPS 340, 1995
<i>Date, Set or Found</i> JUNE 1995 SET	<i>Latitude</i> N39° 16'57.43892"	<i>Longitude</i> W84° 01'19.30595"	<i>Horizontal Datum</i> NAD 83	<i>State Plane Zone</i> OHS3402
	<i>Northing</i> 470781.493 (US survey ft.)	<i>Easting</i> 1537702.371 (US survey ft.)	<i>Elevation</i> 951.245 (US survey ft.)	<i>Vertical Datum</i> NAVD 88
<i>Crew Chief</i> T. MOCHTY	<i>Convergence</i> -0° 57'56.726673"	<i>Back Station I.D.</i>	<i>Grid Azimuth & Distance to back station</i>	
<i>Established by Agency</i> WOOLPERT	<i>Scale Factor</i> .99993750	<i>Ahead Station I.D.</i> 340A	<i>Grid Azimuth & Distance to ahead station</i> 72° 40'49.051" 994.2(feet)	
<i>Ohio Professional Surveyor in charge of monumentation</i> THOMAS F. MOCHTY			<i>Oh. Registration No.</i> *7682	





WOOLPERT

Warren County GIS GPS Control Network



Control Monument Information Sheet

<i>Township</i> HARLAN	<i>Station Description</i> The station is located 0.2 mi. east of the intersection of Gustin-Rider Road and SR 28 and is on the south side of SR 28. The station is a concrete monument with an aluminium disk, set +/- 0.2ft. below grade and is stamped WARREN CO. GIS, GPS 340A, 1995.			<i>Station Designation</i> 340A
<i>Locality/County</i> WARREN				<i>Stamping on Mark</i> WARREN CO. GIS GPS 340A, 1995
<i>Date, Set or Found</i> JUNE 1995 SET	<i>Latitude</i> N39° 17'0"	<i>Longitude</i> W84° 01'7"	<i>Horizontal Datum</i> NAD 83	<i>State Plane Zone</i> OHS3402
	<i>Northing</i> (US survey ft.)	<i>Easting</i> (US survey ft.)	<i>Elevation</i> (US survey ft.)	<i>Vertical Datum</i> NAVD 88
<i>Crew Chief</i> T. MOCHTY	<i>Convergence</i>	<i>Back Station I.D.</i> 340	<i>Grid Azimuth & Distance to back station</i> 252° 40'49.051" 994.2(feet)	
<i>Established by Agency</i> WOOLPERT	<i>Scale Factor</i>	<i>Ahead Station I.D.</i>	<i>Grid Azimuth & Distance to ahead station</i>	

Ohio Professional Surveyor
charge of monumentation

THOMAS F. MOCHTY

Oh. Registration No.
*7682



No Scale

