



WOOLPERT

# Warren County GIS GPS Control Network

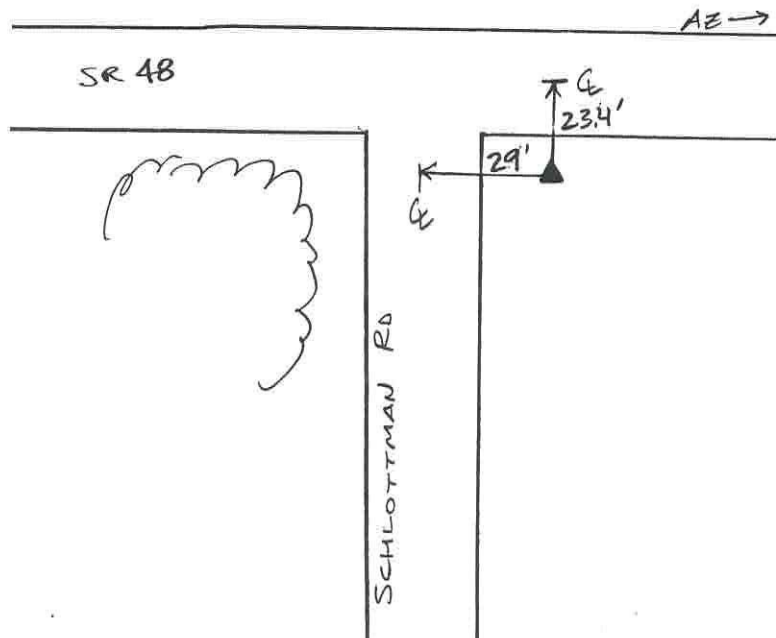


## Control Monument Information Sheet

<i>Township</i> HAMILTON	<i>Station Description</i> The station is located in the southeast corner of the intersection of SR 48 and Schlottman Road. The station is a concrete monument with an aluminium disk, set +/- 0.2ft. below grade and is stamped WARREN CO. GIS, GPS 28, 1995.			<i>Station Designation</i> 28
<i>Locality/County</i> WARREN				<i>Stamping on Mark</i> WARREN CO. GIS GPS 28, 1995
<i>Date, Set or Found</i> JUNE 1995 SET	<i>Latitude</i> N39° 18'22.74142"	<i>Longitude</i> W84° 13'3.57161"	<i>Horizontal Datum</i> NAD 83	<i>State Plane Zone</i> OHS3402
	<i>Northing</i> 480403.439 (US survey ft.)	<i>Easting</i> 1482501.582 (US survey ft.)	<i>Elevation</i> 795.986 (US survey ft.)	<i>Vertical Datum</i> NAVD 88
<i>Crew Chief</i> T. MOCHTY	<i>Convergence</i> -1° 5'23.596994"	<i>Back Station I.D.</i>	<i>Grid Azimuth &amp; Distance to back station</i>	
<i>Established by Agency</i> WOOLPERT	<i>Scale Factor</i> .99993680	<i>Ahead Station I.D.</i> 28A	<i>Grid Azimuth &amp; Distance to ahead station</i> 128° 02'29.354" 750.7(feet)	
<i>Ohio Professional Surveyor charge of monumentation</i> THOMAS F. MOCHTY			<i>Oh. Registration No.</i> *7682	



No Scale





WOOLPERT

# Warren County GIS GPS Control Network

## Control Monument Information Sheet



<i>Township</i> HAMILTON	<i>Station Description</i> The station is located east of the intersection of SR 48 and Schlottman Road and is on the north side of SR 48 just east of the drive to *8710. The station is a concrete monument with an aluminium disk, set +/- 0.2ft. below grade and is stamped WARREN CO. GIS, GPS 28A, 1995.			<i>Station Designation</i> 28A
<i>Locality/County</i> WARREN				<i>Stamping on Mark</i> WARREN CO. GIS GPS 28A, 1995
<i>Date, Set or Found</i> JUNE 1995 SET	<i>Latitude</i> N39° 18'18"	<i>Longitude</i> W84° 12'55"	<i>Horizontal Datum</i> NAD 83	<i>State Plane Zone</i> OHS3402
	<i>Northing</i> (US survey ft.)	<i>Easting</i> (US survey ft.)	<i>Elevation</i> (US survey ft.)	<i>Vertical Datum</i> NAVD 88
<i>Crew Chief</i> T. MOCHTY	<i>Convergence</i>	<i>Back Station I.D.</i> 28	<i>Grid Azimuth &amp; Distance to back station</i> 308° 2'29.354" 750.7(feet)	
<i>Established by Agency</i> WOOLPERT	<i>Scale Factor</i>	<i>Ahead Station I.D.</i>	<i>Grid Azimuth &amp; Distance to ahead station</i>	

Ohio Professional Surveyor  
charge of monumentation

THOMAS F. MOCHTY

Oh. Registration No.  
\*7682



No Scale

