



WOOLPERT

Warren County GIS GPS Control Network

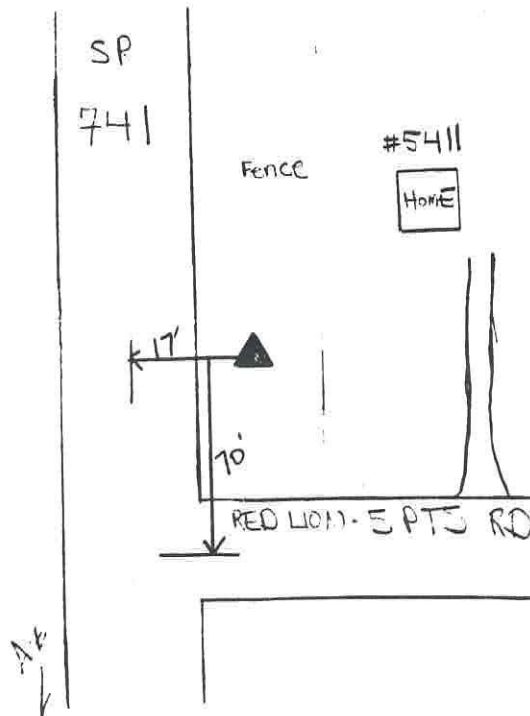
Control Monument Information Sheet



<i>Township</i> CLEARCREEK	<i>Station Description</i> The station is located north of the intersection of SR 741 and Red Lion-Five Points Road in Clearcreek Township. The station is 70' north of Red Lion-Five Points Road and is 17' east of SR 741. The station is a concrete monument with an aluminium disk, set +/- 0.2ft. below grade and is stamped WARREN CO. GIS, S-279, 1995.			<i>Station Designation</i> S-279
<i>Locality/City</i> SPRINGBORO				<i>Stamping on Mark</i> WARREN CO. GIS GPS S-279, 1995
<i>Date, Set or Found</i> JUNE 1995 SET	<i>Latitude</i> N39° 31'20.27362"	<i>Longitude</i> W84° 14'10.80457"	<i>Horizontal Datum</i> NAD 83	<i>State Plane Zone</i> OHS3402
	<i>Northing</i> 559155.955 (US survey ft.)	<i>Easting</i> 1478730.622 (US survey ft.)	<i>Elevation</i> 920.664 (US survey ft.)	<i>Vertical Datum</i> NAVD 88
<i>Crew Chief</i> T. MOCHTY	<i>Convergence</i> -1° 6'6.257620"	<i>Back Station I.D.</i>	<i>Grid Azimuth & Distance to back station</i>	
<i>Established by Agency</i> WOOLPERT	<i>Scale Factor</i> .99993880	<i>Ahead Station I.D.</i> S-279A	<i>Grid Azimuth & Distance to ahead station</i> 186° 47'37.624 1384.5(feet)	
<i>Ohio Professional Surveyor</i> in charge of monumentation THOMAS F. MOCHTY			<i>Oh. Registration No.</i> *7682	



No Scale





WOOLPERT

Warren County GIS GPS Control Network

Control Monument Information Sheet



<i>Township</i> CLEARCREEK	<i>Station Description</i> The station is located south of the intersection of SR 741 and Red Lion-Five Points Road in Clearcreek Township. The station is on the west side of SR 741 and +/-1400' south of the main station S-279. The station is 55' south of power pole #583, 75' north of power pole #584, and 24' west of the centerline of SR 741. The station is a concrete monument with an aluminium disk, set +/- 0.2ft. below grade and is stamped WARREN CO. GIS, S-279A, 1995.			<i>Station Designation</i> S-279A
<i>Locality/City</i> SPRINGBORO	<i>Stamping on Mark</i> WARREN CO. GIS GPS S-279A, 1995			
<i>Date, Set or Found</i> JUNE 1995 SET	<i>Latitude</i> N39° 31'6"	<i>Longitude</i> W84° 14'12"	<i>Horizontal Datum</i> NAD 83	<i>State Plane Zone</i> OHS3402
	<i>Northing</i> (US survey ft.)	<i>Easting</i> (US survey ft.)	<i>Elevation</i> (US survey ft.)	<i>Vertical Datum</i> NAVD 88
<i>Crew Chief</i> T. MOCHTY	<i>Convergence</i>	<i>Back Station I.D.</i> S-279	<i>Grid Azimuth & Distance to back station</i> 6° 47'37.624 1384.5(feet)	
<i>Established by Agency</i> WOOLPERT	<i>Scale Factor</i>	<i>Ahead Station I.D.</i>	<i>Grid Azimuth & Distance to ahead station</i>	

Ohio Professional Surveyor
in charge of monumentation

THOMAS F. MOCHTY

Oh. Registration No.
*7682

