



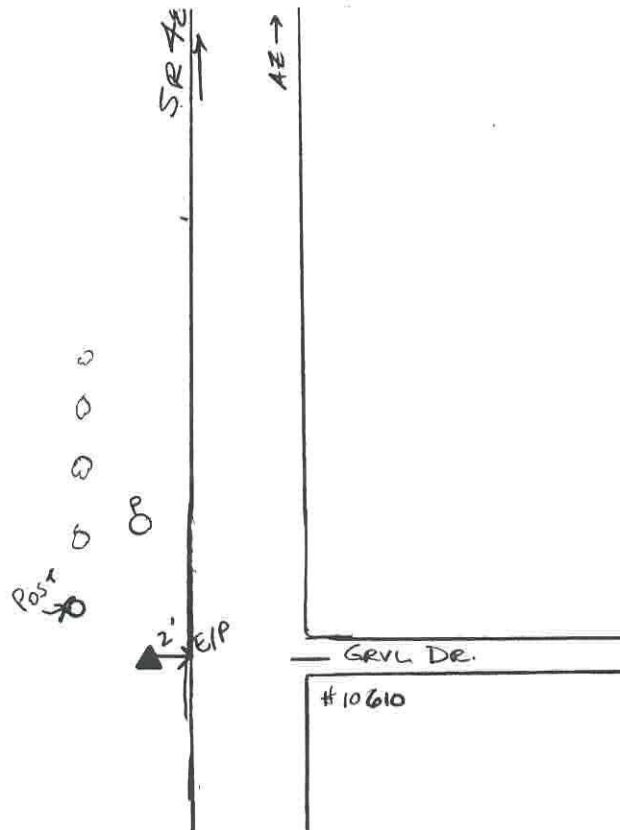
WOOLPERT

# Warren County GIS GPS Control Network

## Control Monument Information Sheet



<i>Township</i> HAMILTON	<i>Station Description</i> The station is located southeast of the intersection of SR 48 and Schlottman Road. The station is a concrete monument with an aluminium disk, set +/- 0.2ft. below grade and is stamped WARREN CO. GIS, GPS 27, 1995.			<i>Station Designation</i> 27
<i>Locality/County</i> WARREN				<i>Stamping on Mark</i> WARREN CO. GIS GPS 27, 1995
<i>Date, Set or Found</i> JUNE 1995 SET	<i>Latitude</i> N39° 16'32.61326"	<i>Longitude</i> W84° 13'45.69729"	<i>Horizontal Datum</i> NAD 83	<i>State Plane Zone</i> OHS3402
	<i>Northing</i> 469326.807 (US survey ft.)	<i>Easting</i> 1478977.741 (US survey ft.)	<i>Elevation</i> 752.771 (US survey ft.)	<i>Vertical Datum</i> NAVD 88
<i>Crew Chief</i> T. MOCHTY	<i>Convergence</i> -1° 5'50.326561"	<i>Back Station I.D.</i>	<i>Grid Azimuth &amp; Distance to back station</i>	
<i>Established by Agency</i> WOOLPERT	<i>Scale Factor</i> .99993770	<i>Ahead Station I.D.</i> 27A	<i>Grid Azimuth &amp; Distance to ahead station</i> 9° 50'51.011" 1070.4(feet)	
<i>Ohio Professional Surveyor in charge of monumentation</i> THOMAS F. MOCHTY		<i>Oh. Registration No.</i> *7682		





WOOLPERT

# Warren County GIS GPS Control Network

## Control Monument Information Sheet



<i>Township</i> HAMILTON	<i>Station Description</i> The station is located south of the intersection of SR 48 and Schlottman Road and is on the east side of Schlottman Road. The station is a concrete monument with an aluminium disk, set +/- 0.2ft. below grade and is stamped WARREN CO. GIS, GPS 27A, 1995.			<i>Station Designation</i> 27A
<i>Locality/County</i> WARREN				<i>Stamping on Mark</i> WARREN CO. GIS GPS 27A, 1995
<i>Date, Set or Found</i> JUNE 1995 SET	<i>Latitude</i> N39° 16'43"	<i>Longitude</i> W84° 13'43"	<i>Horizontal Datum</i> NAD 83	<i>State Plane Zone</i> OHS3402
	<i>Northing</i> (US survey ft.)	<i>Easting</i> (US survey ft.)	<i>Elevation</i> (US survey ft.)	<i>Vertical Datum</i> NAVD 88
<i>Crew Chief</i> T. MOCHTY	<i>Convergence</i>	<i>Back Station I.D.</i> 27	<i>Grid Azimuth &amp; Distance to back station</i> 189° 50'51.011" 1070.4(feet)	
<i>Established by Agency</i> WOOLPERT	<i>Scale Factor</i>	<i>Ahead Station I.D.</i>	<i>Grid Azimuth &amp; Distance to ahead station</i>	

Ohio Professional Surveyor  
in charge of monumentation

THOMAS F. MOCHTY

Oh. Registration No.  
\*7682



No Scale

