



WOOLPERT

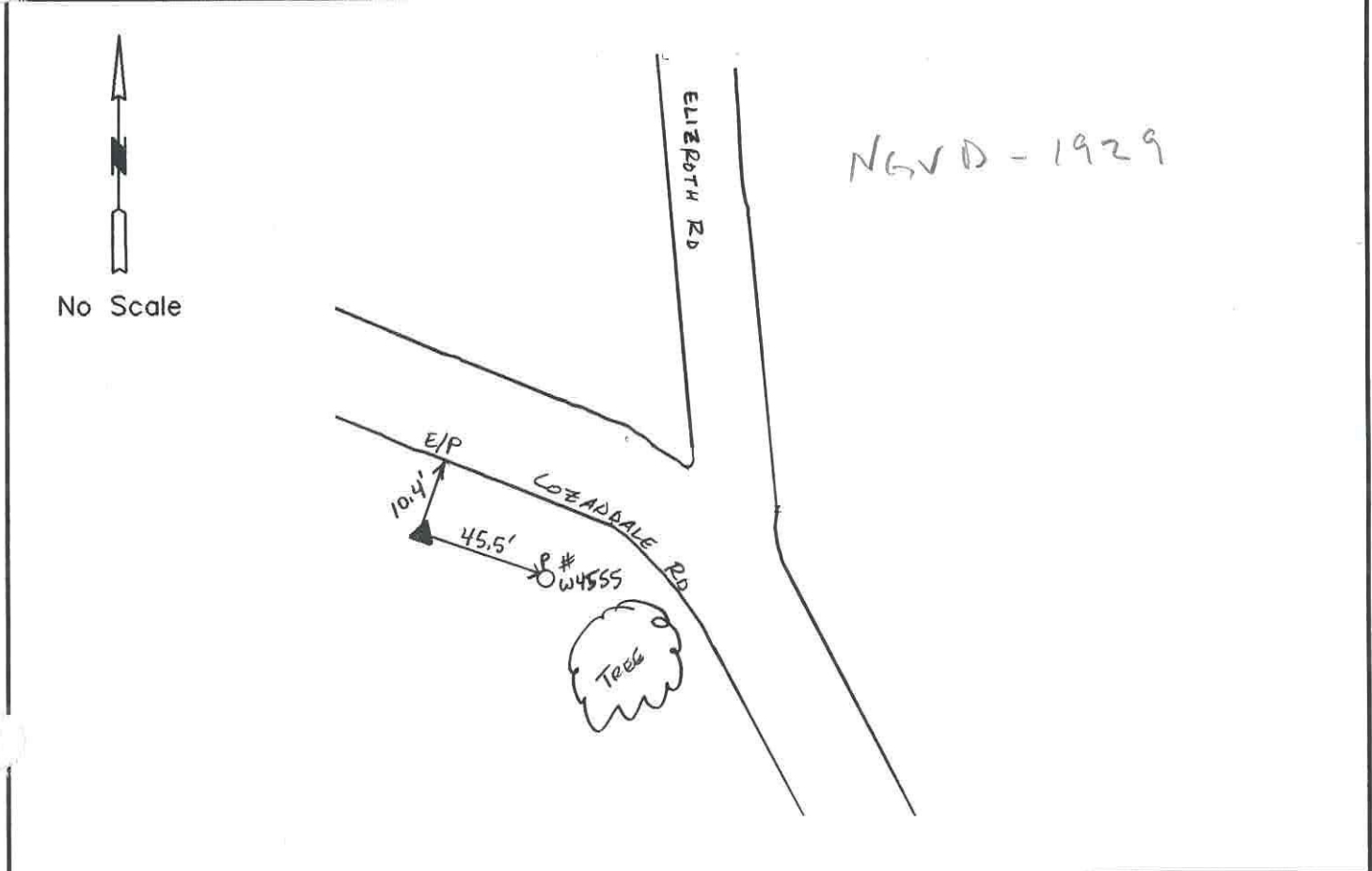
Warren County GIS GPS Control Network

Control Monument Information Sheet



<i>Township</i> HARLAN	<i>Station Description</i> The station is located northwest of the intersection of Eltzroth Road and Cozaddale Road. The station is a concrete monument with an aluminium disk, set +/- 0.2ft. below grade and is stamped WARREN CO. GIS, GPS 25, 1995.			<i>Station Designation</i> 25
<i>Locality/County</i> WARREN				<i>Stamping on Mark</i> WARREN CO. GIS GPS 25, 1995
<i>Date, Set or Found</i> JUNE 1995 SET	<i>Latitude</i> N39° 16'1.69744"	<i>Longitude</i> W84° 09'23.37599"	<i>Horizontal Datum</i> NAD 83	<i>State Plane Zone</i> OHS3402
	<i>Northing</i> 465812.825 (US survey ft.)	<i>Easting</i> 1499544.143 (US survey ft.)	<i>Elevation</i> 855.871 (US survey ft.)	<i>Vertical Datum</i> NAVD 88
<i>Crew Chief</i> T. MOCHTY	<i>Convergence</i> -1° 3'3.878571"	<i>Back Station I.D.</i> MON-00	<i>Grid Azimuth & Distance to back station</i> 000° 00'00.000 0000.000(feet)	
<i>Established by Agency</i> WOOLPERT	<i>Scale Factor</i> .99993800	<i>Ahead Station I.D.</i> 25A	<i>Grid Azimuth & Distance to ahead station</i> 316° 54'38.325" 831.4(feet)	

Ohio Professional Surveyor in charge of monumentation **THOMAS F. MOCHTY** Ohio Registration No. *7682





WOOLPERT

Warren County GIS GPS Control Network

Control Monument Information Sheet



<i>Township</i> HARLAN	<i>Station Description</i> The station is located 0.1 mi. northwest of the intersection of Eltzroth Road and Cozaddale Road and is on the southwest side of Cozaddale Road. The station is a concrete monument with an aluminium disk, set +/- 0.2ft. below grade and is stamped WARREN CO. GIS, GPS 25A, 1995.			<i>Station Designation</i> 25A
<i>Locality/County</i> WARREN				<i>Stamping on Mark</i> WARREN CO. GIS GPS 25A, 1995
<i>Date, Set or Found</i> JUNE 1995 SET	<i>Latitude</i> N39° 16'7"	<i>Longitude</i> W84° 09'30"	<i>Horizontal Datum</i> NAD 83	<i>State Plane Zone</i> OHS3402
	<i>Northing</i> (US survey ft.)	<i>Easting</i> (US survey ft.)	<i>Elevation</i> (US survey ft.)	<i>Vertical Datum</i> NAVD 88
<i>Crew Chief</i> T. MOCHTY	<i>Convergence</i>	<i>Back Station I.D.</i> 25	<i>Grid Azimuth & Distance to back station</i> 136° 54'38.325" 831.4(feet)	
<i>Established by Agency</i> WOOLPERT	<i>Scale Factor</i>	<i>Ahead Station I.D.</i>	<i>Grid Azimuth & Distance to ahead station</i>	

Ohio Professional Surveyor
in charge of monumentation

THOMAS F. MOCHTY

Oh. Registration No.
*7682



No Scale

