



WOOLPERT

# Warren County GIS GPS Control Network

## Control Monument Information Sheet

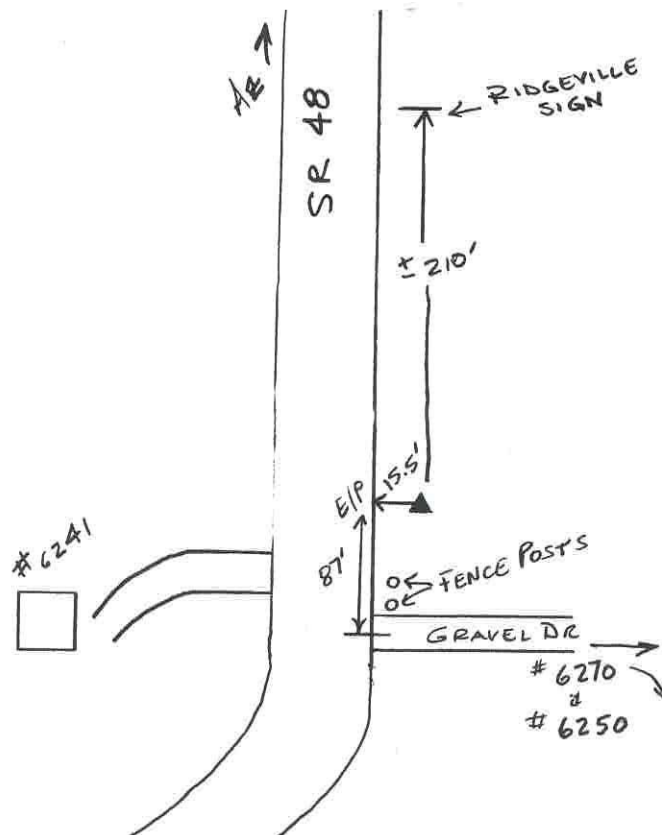


<i>Township</i> CLEARCREEK	<i>Station Description</i> The station is located 0.3 mi. south of the intersection of Lower Springboro Road and SR 48 and is on the east side of SR 48. The station is a concrete monument with an aluminium disk, set +/- 0.2ft. below grade and is stamped WARREN CO. GIS, GPS 249, 1995.			<i>Station Designation</i> 249
<i>Locality/County</i> WARREN				<i>Stamping on Mark</i> WARREN CO. GIS GPS 249, 1995
<i>Date, Set or Found</i> JUNE 1995 SET	<i>Latitude</i> N39° 31'33.07969"	<i>Longitude</i> W84° 10'37.46645"	<i>Horizontal Datum</i> NAD 83	<i>State Plane Zone</i> OHS3402
	<i>Northing</i> 560135.458 (US survey ft.)	<i>Easting</i> 1495468.413 (US survey ft.)	<i>Elevation</i> 874.152 (US survey ft.)	<i>Vertical Datum</i> NAVD 88
<i>Crew Chief</i> T. MOCHTY	<i>Convergence</i> -1° 3'50.890415"	<i>Back Station I.D.</i>	<i>Grid Azimuth &amp; Distance to back station</i>	
<i>Established by Agency</i> WOOLPERT	<i>Scale Factor</i> .99993900	<i>Ahead Station I.D.</i> 249A	<i>Grid Azimuth &amp; Distance to ahead station</i> 3° 44'37.118" 1038.3(feet)	

Ohio Professional Surveyor  
in charge of monumentation

THOMAS F. MOCHTY

Oh. Registration No.  
\*7682





WOOLPERT

# Warren County GIS GPS Control Network



## Control Monument Information Sheet

<i>Township</i> CLEARCREEK	<i>Station Description</i> The station is located 200' south of the intersection of Lower Springboro Road and SR 48 and is on the west side of SR 48 in front of #6435. The station is a concrete monument with an aluminium disk, set +/- 0.2ft. below grade and is stamped WARREN CO. GIS, GPS 249A, 1995.			<i>Station Designation</i> 249A
<i>Locality/County</i> WARREN				<i>Stamping on Mark</i> WARREN CO. GIS GPS 249A, 1995
<i>Date, Set or Found</i> JUNE 1995 SET	<i>Latitude</i> N39° 31'43"	<i>Longitude</i> W84° 10'36"	<i>Horizontal Datum</i> NAD 83	<i>State Plane Zone</i> OHS3402
	<i>Northing</i> (US survey ft.)	<i>Easting</i> (US survey ft.)	<i>Elevation</i> (US survey ft.)	<i>Vertical Datum</i> NAVD 88
<i>Crew Chief</i> T. MOCHTY	<i>Convergence</i>	<i>Back Station I.D.</i> 249	<i>Grid Azimuth &amp; Distance to back station</i> 183° 44'37.118" 1038.3(feet)	
<i>Established by Agency</i> WOOLPERT	<i>Scale Factor</i>	<i>Ahead Station I.D.</i>	<i>Grid Azimuth &amp; Distance to ahead station</i>	

Ohio Professional Surveyor  
charge of monumentation

THOMAS F. MOCHTY

Oh. Registration No.  
\*7682

