



WOOLPERT

Warren County GIS GPS Control Network

Control Monument Information Sheet

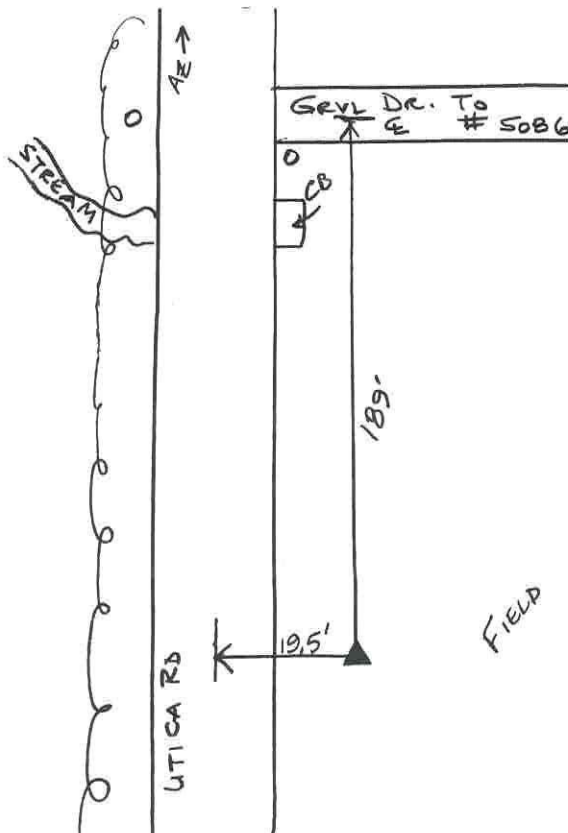


<i>Township</i> CLEARCREEK	<i>Station Description</i> The station is located on the east side of Utira Road and is south of the drive to *5086. The station is a concrete monument with an aluminium disk, set +/- 0.2ft. below grade and is stamped WARREN CO. GIS, GPS 239, 1995.			<i>Station Designation</i> 239
<i>Locality/County</i> WARREN				<i>Stamping on Mark</i> WARREN CO. GIS GPS 239, 1995
<i>Date, Set or Found</i> JUNE 1995 SET	<i>Latitude</i> N39° 30'35.53339"	<i>Longitude</i> W84° 09'34.56145"	<i>Horizontal Datum</i> NAD 83	<i>State Plane Zone</i> OHS3402
	<i>Northing</i> 554223.081 (US survey ft.)	<i>Easting</i> 1500289.417 (US survey ft.)	<i>Elevation</i> 933.338 (US survey ft.)	<i>Vertical Datum</i> NAVD 88
<i>Crew Chief</i> T. MOCHTY	<i>Convergence</i> -1° 3'10.975964"	<i>Back Station I.D.</i>	<i>Grid Azimuth & Distance to back station</i>	
<i>Established by Agency</i> WOOLPERT	<i>Scale Factor</i> .99993830	<i>Ahead Station I.D.</i> 239A	<i>Grid Azimuth & Distance to ahead station</i> 3° 17'35.944" 1140.5(feet)	

Ohio Professional Surveyor
in charge of monumentation

THOMAS F. MOCHTY

Oh. Registration No.
•7682





WOOLPERT

Warren County GIS GPS Control Network

Control Monument Information Sheet



<i>Township</i> CLEARCREEK	<i>Station Description</i> The station is located 0.65 mi. north of the intersection of Pekin Road and Utica Road and is on the west side of Utica Road across from the drive to #5252. The station is a concrete monument with an aluminium disk, set +/- 0.2ft. below grade and is stamped WARREN CO. GIS, GPS 239A, 1995.			<i>Station Designation</i> 239A
<i>Locality/County</i> WARREN				<i>Stamping on Mark</i> WARREN CO. GIS GPS 239A, 1995
<i>Date, Set or Found</i> JUNE 1995 SET	<i>Latitude</i> N39° 30'46"	<i>Longitude</i> W84° 09'33"	<i>Horizontal Datum</i> NAD 83	<i>State Plane Zone</i> OHS3402
	<i>Northing</i> (US survey ft.)	<i>Easting</i> (US survey ft.)	<i>Elevation</i> (US survey ft.)	<i>Vertical Datum</i> NAVD 88
<i>Crew Chief</i> T. MOCHTY	<i>Convergence</i>	<i>Back Station I.D.</i> 239	<i>Grid Azimuth & Distance to back station</i> 183° 17'35.944" 1140.5(feet)	
<i>Established by Agency</i> WOOLPERT	<i>Scale Factor</i>	<i>Ahead Station I.D.</i>	<i>Grid Azimuth & Distance to ahead station</i>	

Ohio Professional Surveyor
in charge of monumentation

THOMAS F. MOCHTY

Oh. Registration No.
*7682

