



WOOLPERT

Warren County GIS GPS Control Network

Control Monument Information Sheet

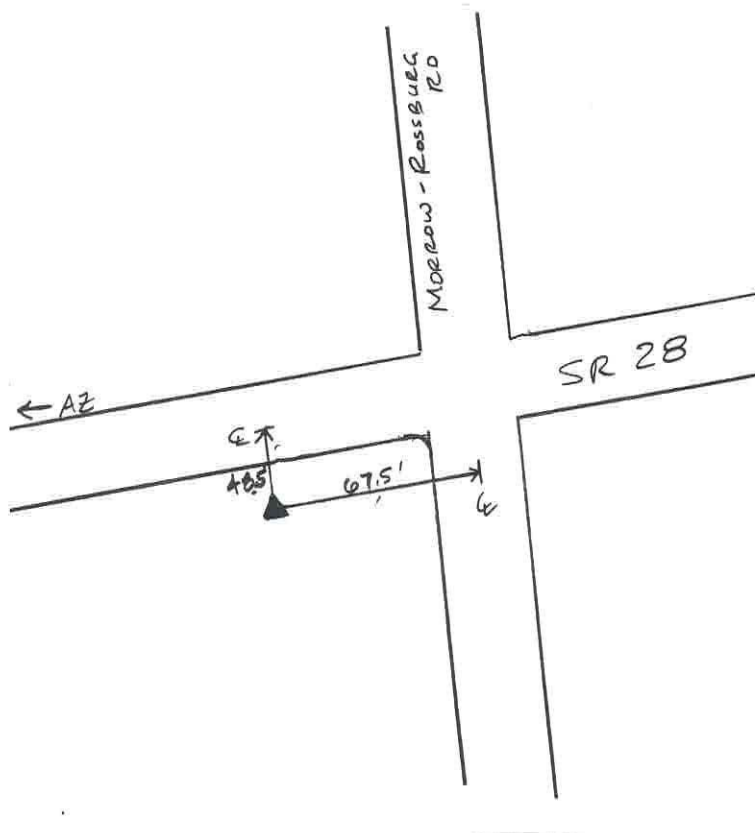


<i>Township</i> HARLAN	<i>Station Description</i> The station is located southwest of the intersection of Morrow-Rossburg Road and SR 28 and is on the south side of SR 28. The station is a concrete monument with an aluminium disk, set +/- 0.2ft. below grade and is stamped WARREN CO. GIS, GPS 22, 1995.			<i>Station Designation</i> 22
<i>Locality/County</i> WARREN				<i>Stamping on Mark</i> WARREN CO. GIS GPS 22, 1995
<i>Date, Set or Found</i> JUNE 1995 SET	<i>Latitude</i> N39° 15'48.89631"	<i>Longitude</i> W84° 04'53.63111"	<i>Horizontal Datum</i> NAD 83	<i>State Plane Zone</i> OHS3402
	<i>Northing</i> 464137.576 (US survey ft.)	<i>Easting</i> 1520731.794 (US survey ft.)	<i>Elevation</i> 899.237 (US survey ft.)	<i>Vertical Datum</i> NAVD 88
<i>Crew Chief</i> T. MOCHTY	<i>Convergence</i> -1° 0'12.720175"	<i>Back Station I.D.</i>	<i>Grid Azimuth & Distance to back station</i>	
<i>Established by Agency</i> WOOLPERT	<i>Scale Factor</i> .99993810	<i>Ahead Station I.D.</i> 22A	<i>Grid Azimuth & Distance to ahead station</i> 251° 19'49.510" 2038.2(feet)	

Ohio Professional Surveyor
in charge of monumentation

THOMAS F. MOCHTY

Oh. Registration No.
*7682





WOOLPERT

Warren County GIS GPS Control Network

Control Monument Information Sheet



<i>Township</i> HARLAN	<i>Station Description</i> The station is located 0.35 mi. west of the intersection of SR 28 and Morrow-Rossburg Road and is on the north side of SR 28. The station is a concrete monument with an aluminium disk, set +/- 0.2ft. below grade and is stamped WARREN CO. GIS, GPS 22A, 1995.			<i>Station Designation</i> 22A
<i>Locality/County</i> WARREN				<i>Stamping on Mark</i> WARREN CO. GIS GPS 22A, 1995
<i>Date, Set or Found</i> JUNE 1995 SET	<i>Latitude</i> N39° 15'42"	<i>Longitude</i> W84° 05'18"	<i>Horizontal Datum</i> NAD 83	<i>State Plane Zone</i> OHS3402
	<i>Northing</i> (US survey ft.)	<i>Easting</i> (US survey ft.)	<i>Elevation</i> (US survey ft.)	<i>Vertical Datum</i> NAVD 88
<i>Crew Chief</i> T. MOCHTY	<i>Convergence</i>	<i>Back Station I.D.</i> 22	<i>Grid Azimuth & Distance to back station</i> 71° 19'49.510" 2038.2(feet)	
<i>Established by Agency</i> WOOLPERT	<i>Scale Factor</i>	<i>Ahead Station I.D.</i>	<i>Grid Azimuth & Distance to ahead station</i>	

Ohio Professional Surveyor
in charge of monumentation

THOMAS F. MOCHTY

Oh. Registration No.
*7682



No Scale

