



WOOLPERT

Warren County GIS GPS Control Network

Control Monument Information Sheet

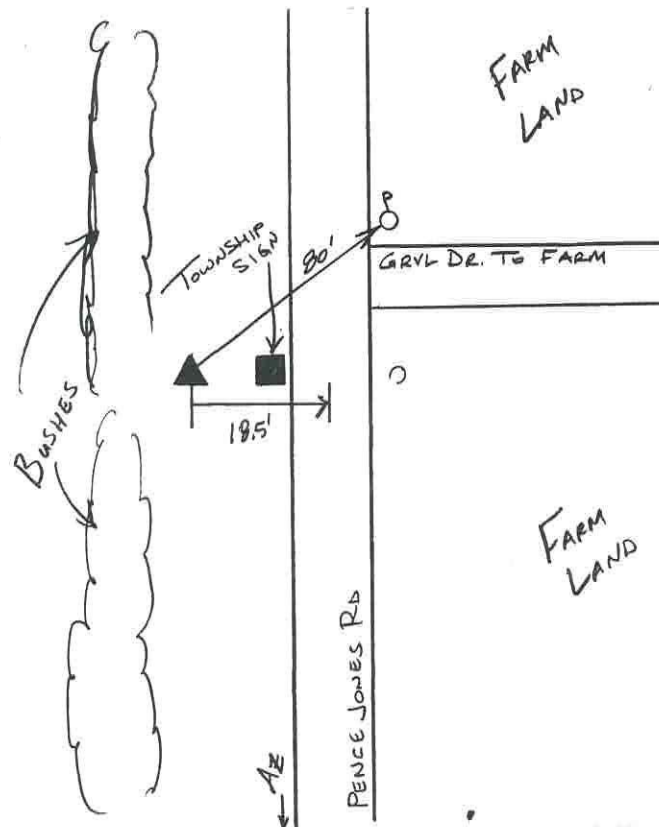


<i>Township</i> WAYNE	<i>Station Description</i> The station is located north of the intersection of Collett Road and Pence-Jones Road and is on the west side of Pence-Jones Road next to a township sign. The station is a concrete monument with an aluminium disk, set +/- 0.2ft. below grade and is stamped WARREN CO. GIS, GPS 218, 1995.			<i>Station Designation</i> 218
<i>Locality/County</i> WARREN				<i>Stamping on Mark</i> WARREN CO. GIS GPS 218, 1995
<i>Date, Set or Found</i> JUNE 1995 SET	<i>Latitude</i> N39° 34'17.57416"	<i>Longitude</i> W84° 00'32.69969"	<i>Horizontal Datum</i> NAD 83	<i>State Plane Zone</i> OHS3402
	<i>Northing</i> 575940.170 (US survey ft.)	<i>Easting</i> 1543124.968 (US survey ft.)	<i>Elevation</i> 788.637 (US survey ft.)	<i>Vertical Datum</i> NAVD 88
<i>Crew Chief</i> T. MOCHTY	<i>Convergence</i> -0° 57'27.154091"	<i>Back Station I.D.</i>	<i>Grid Azimuth & Distance to back station</i>	
<i>Established by Agency</i> WOOLPERT	<i>Scale Factor</i> .99994120	<i>Ahead Station I.D.</i> 218A	<i>Grid Azimuth & Distance to ahead station</i> 181° 56'49.154" 1102.4(feet)	

Ohio Professional Surveyor
in charge of monumentation

THOMAS F. MOCHTY

Oh. Registration No.
*7682





WOOLPERT

Warren County GIS GPS Control Network

Control Monument Information Sheet



<i>Township</i> MASSIE	<i>Station Description</i> The station is located 0.08 mi. north of the intersection of Pence Jones Road and Collett Road, and is on the east side of Pence Jones Road. The station is a concrete monument with an aluminium disk, set +/- 0.2ft. below grade and is stamped WARREN CO. GIS, GPS 218A, 1995.			<i>Station Designation</i> 218A
<i>Locality/County</i> WARREN				<i>Stamping on Mark</i> WARREN CO. GIS GPS 218A, 1995
<i>Date, Set or Found</i> JUNE 1995 SET	<i>Latitude</i> N39° 34'6"	<i>Longitude</i> W84° 00'32"	<i>Horizontal Datum</i> NAD 83	<i>State Plane Zone</i> OHS3402
	<i>Northing</i> (US survey ft.)	<i>Easting</i> (US survey ft.)	<i>Elevation</i> (US survey ft.)	<i>Vertical Datum</i> NAVD 88
<i>Crew Chief</i> T. MOCHTY	<i>Convergence</i>	<i>Back Station I.D.</i> 218	<i>Grid Azimuth & Distance to back station</i> 1° 56'49.154" 1102.4(feet)	
<i>Established by Agency</i> WOOLPERT	<i>Scale Factor</i>	<i>Ahead Station I.D.</i>	<i>Grid Azimuth & Distance to ahead station</i>	

Ohio Professional Surveyor
in charge of monumentation

THOMAS F. MOCHTY

Oh. Registration No.
•7682

