



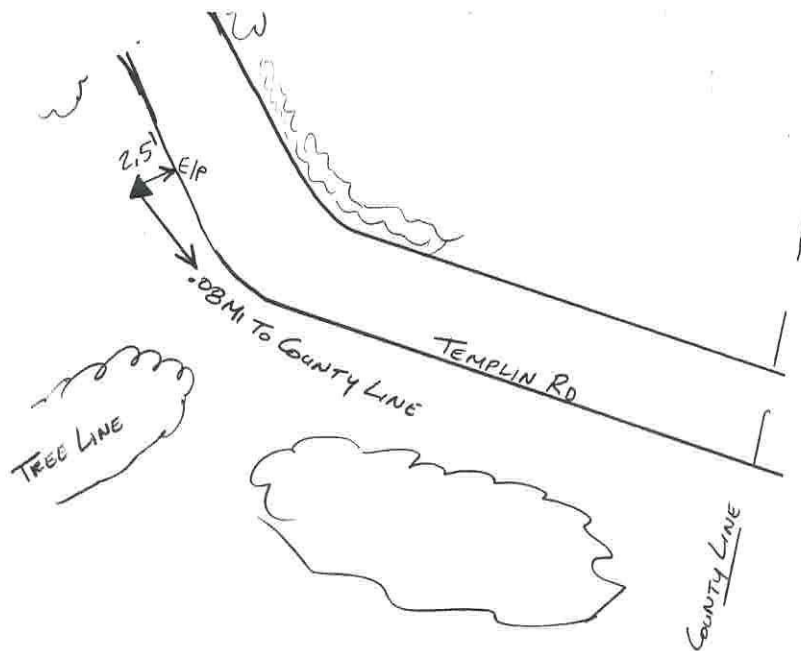
WOOLPERT

# Warren County GIS GPS Control Network

## Control Monument Information Sheet



<i>Township</i> HARLAN	<i>Station Description</i> The station is located 0.92 mi. southeast of the intersection of Edwardsville Road and Templin Road and is on the south-west side of Templin Road 0.08 mi. northwest of the county line. The station is a concrete monument with an aluminium disk, set +/- 0.2ft. below grade and is stamped WARREN CO. GIS, GPS 15, 1995.			<i>Station Designation</i> 15
<i>Locality/County</i> WARREN				<i>Stamping on Mark</i> WARREN CO. GIS GPS 15, 1995
<i>Date, Set or Found</i> JUNE 1995 SET	<i>Latitude</i> N39° 20'6.69718"	<i>Longitude</i> W83° 59'59.34918"	<i>Horizontal Datum</i> NAD 83	<i>State Plane Zone</i> OHS3402
	<i>Northing</i> 489821.320 (US survey ft.)	<i>Easting</i> 1544306.226 (US survey ft.)	<i>Elevation</i> 943.568 (US survey ft.)	<i>Vertical Datum</i> NAVD 88
<i>Crew Chief</i> T. MOCHTY	<i>Convergence</i> -0° 57'5.992541"	<i>Back Station I.D.</i>	<i>Grid Azimuth &amp; Distance to back station</i>	
<i>Established by Agency</i> WOOLPERT	<i>Scale Factor</i> .99993630	<i>Ahead Station I.D.</i> 15A	<i>Grid Azimuth &amp; Distance to ahead station</i> 151° 58'36.508" 758.7(feet)	
<i>Ohio Professional Surveyor</i> in charge of monumentation THOMAS F. MOCHTY			<i>Oh. Registration No.</i> *7682	





WOOLPERT

# Warren County GIS GPS Control Network

## Control Monument Information Sheet



<i>Township</i>	<i>Station Description</i> The station is located 1.0 mi. southeast of the intersection of Edwardsville Road and Templin Road and is on the south side of Templin Road in Clinton County. The station is a concrete monument with an aluminium disk, set +/- 0.2ft. below grade and is stamped WARREN CO. GIS, GPS 15A, 1995.			<i>Station Designation</i> 15A
<i>Locality/County</i> CLINTON				<i>Stamping on Mark</i> WARREN CO. GIS GPS 15A, 1995
<i>Date, Set or Found</i> JUNE 1995 SET	<i>Latitude</i> N39° 20'0"	<i>Longitude</i> W83° 59'54"	<i>Horizontal Datum</i> NAD 83	<i>State Plane Zone</i> OHS3402
	<i>Northing</i> (US survey ft.)	<i>Easting</i> (US survey ft.)	<i>Elevation</i> (US survey ft.)	<i>Vertical Datum</i> NAVD 88
<i>Crew Chief</i> T. MOCHTY	<i>Convergence</i>	<i>Back Station I.D.</i> 15	<i>Grid Azimuth &amp; Distance to back station</i> 331° 58'36.508" 758.7(feet)	
<i>Established by Agency</i> WOOLPERT	<i>Scale Factor</i>	<i>Ahead Station I.D.</i>	<i>Grid Azimuth &amp; Distance to ahead station</i>	

Ohio Professional Surveyor  
in charge of monumentation

THOMAS F. MOCHTY

Oh. Registration No.  
\*7682



No Scale

