



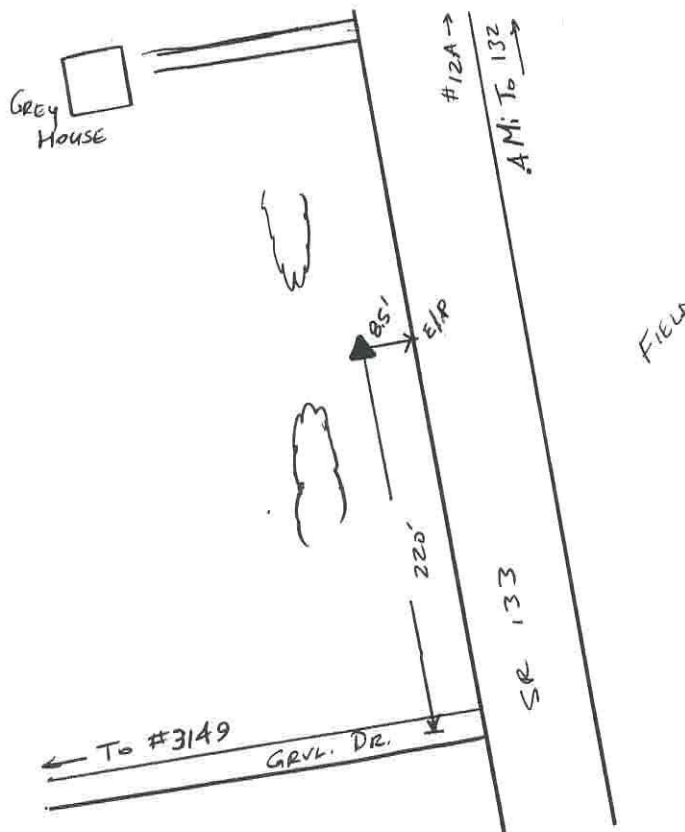
WOOLPERT

# Warren County GIS GPS Control Network

## Control Monument Information Sheet



<i>Township</i> WASHINGTON	<i>Station Description</i> The station is located 0.4 mi. south of the intersection of SR 132 and SR 133 and is on the west side of SR 133. The station is a concrete monument with an aluminium disk, set +/- 0.2ft. below grade and is stamped WARREN CO. GIS, GPS 12, 1995.			<i>Station Designation</i> 12
<i>Locality/County</i> WARREN				<i>Stamping on Mark</i> WARREN CO. GIS GPS 12, 1995
<i>Date, Set or Found</i> JUNE 1995 SET	<i>Latitude</i> N39° 22'35.91801"	<i>Longitude</i> W83° 59'48.62813"	<i>Horizontal Datum</i> NAD 83	<i>State Plane Zone</i> OHS3402
	<i>Northing</i> 504902.369 (US survey ft.)	<i>Easting</i> 1545398.684 (US survey ft.)	<i>Elevation</i> 932.613 (US survey ft.)	<i>Vertical Datum</i> NAVD 88
<i>Crew Chief</i> T. MOCHTY	<i>Convergence</i> -0° 56'59.189825"	<i>Back Station I.D.</i>	<i>Grid Azimuth &amp; Distance to back station</i>	
<i>Established by Agency</i> WOOLPERT	<i>Scale Factor</i> .99993590	<i>Ahead Station I.D.</i> 12A	<i>Grid Azimuth &amp; Distance to ahead station</i> 330° 21'17.725" 811.3(feet)	
<i>Ohio Professional Surveyor in charge of monumentation</i> THOMAS F. MOCHTY			<i>Oh. Registration No.</i> *7682	





WOOLPERT

# Warren County GIS GPS Control Network

## Control Monument Information Sheet



<i>Township</i> WASHINGTON	<i>Station Description</i> The station is located 0.3 mi. south of the intersection of SR 132 and SR 133 and is on the east side of SR 133. The station is a concrete monument with an aluminium disk, set +/- 0.2ft. below grade and is stamped WARREN CO. GIS, GPS 12A, 1995.			<i>Station Designation</i> 12A
<i>Locality/County</i> WARREN				<i>Stamping on Mark</i> WARREN CO. GIS GPS 12A, 1995
<i>Date, Set or Found</i> JUNE 1995 SET	<i>Latitude</i> N39° 22'42"	<i>Longitude</i> W83° 59'53"	<i>Horizontal Datum</i> NAD 83	<i>State Plane Zone</i> OHS3402
	<i>Northing</i> (US survey ft.)	<i>Easting</i> (US survey ft.)	<i>Elevation</i> (US survey ft.)	<i>Vertical Datum</i> NAVD 88
<i>Crew Chief</i> T. MOCHTY	<i>Convergence</i>	<i>Back Station I.D.</i> 12	<i>Grid Azimuth &amp; Distance to back station</i> 150° 21'17.725" 811.3(feet)	
<i>Established by Agency</i> WOOLPERT	<i>Scale Factor</i>	<i>Ahead Station I.D.</i>	<i>Grid Azimuth &amp; Distance to ahead station</i>	

Ohio Professional Surveyor  
in charge of monumentation

THOMAS F. MOCHTY

Oh. Registration No.  
#7682



No Scale

