



WOOLPERT

Warren County GIS GPS Control Network

Control Monument Information Sheet



<i>Township</i> WASHINGTON	<i>Station Description</i> The station is located 0.15 mi. west of the intersection of Strout Road and SR 3 and is on the south side of SR 3. The station is a concrete monument with an aluminium disk, set +/- 0.2ft. below grade and is stamped WARREN CO. GIS, GPS 11, 1995.			<i>Station Designation</i> 11
<i>Locality/County</i> WARREN				<i>Stamping on Mark</i> WARREN CO. GIS GPS 11, 1995
<i>Date, Set or Found</i> JUNE 1995 SET	<i>Latitude</i> N39° 22'51.14012"	<i>Longitude</i> W84° 02'41.82801"	<i>Horizontal Datum</i> NAD 83	<i>State Plane Zone</i> OHS3402
	<i>Northing</i> 506671.267 (US survey ft.)	<i>Easting</i> 1531827.127 (US survey ft.)	<i>Elevation</i> 957.144 (US survey ft.)	<i>Vertical Datum</i> NAVD 88
<i>Crew Chief</i> T. MOCHTY	<i>Convergence</i> -0° 58'49.088533"	<i>Back Station I.D.</i>	<i>Grid Azimuth & Distance to back station</i>	
<i>Established by Agency</i> WOOLPERT	<i>Scale Factor</i> .99993590	<i>Ahead Station I.D.</i> 11A	<i>Grid Azimuth & Distance to ahead station</i> 49° 29'21.823" 1117.9(feet)	

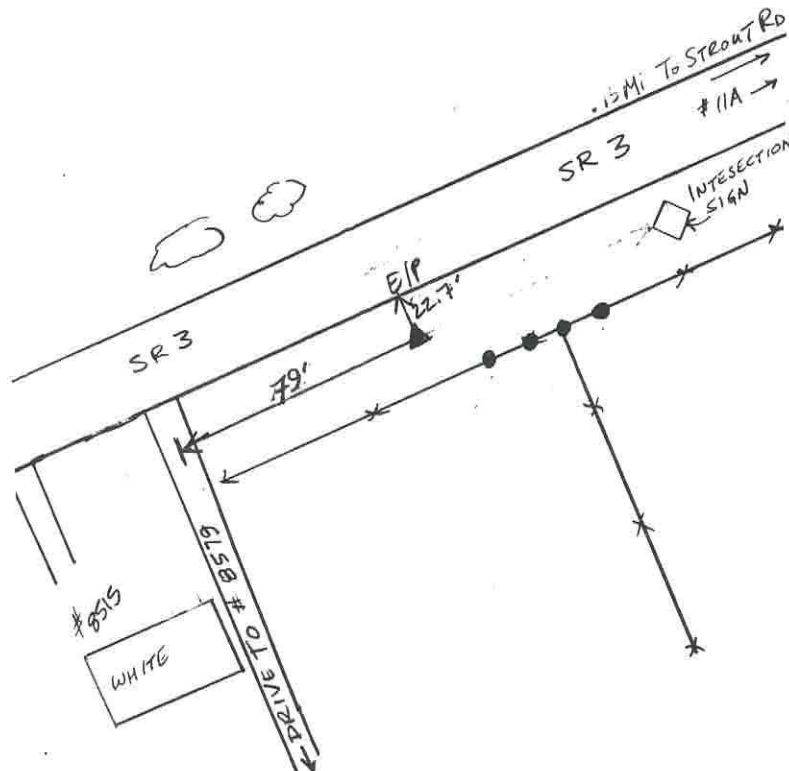
Ohio Professional Surveyor
charge of monumentation

THOMAS F. MOCHTY

Oh. Registration No.
*7682



No Scale





WOOLPERT

Warren County GIS GPS Control Network

Control Monument Information Sheet



<i>Township</i> WASHINGTON	<i>Station Description</i> The station is located northeast of the intersection of SR 3 and Strout Road and is on the north side of SR 3. The station is a concrete monument with an aluminium disk, set +/- 0.2ft. below grade and is stamped WARREN CO. GIS, GPS 11A, 1995.			<i>Station Designation</i> 11A
<i>Locality/County</i> WARREN				<i>Stamping on Mark</i> WARREN CO. GIS GPS 11A, 1995
<i>Date, Set or Found</i> JUNE 1995 SET	<i>Latitude</i> N39° 22'58"	<i>Longitude</i> W84° 02'31"	<i>Horizontal Datum</i> NAD 83	<i>State Plane Zone</i> OHS3402
	<i>Northing</i> (US survey ft.)	<i>Easting</i> (US survey ft.)	<i>Elevation</i> (US survey ft.)	<i>Vertical Datum</i> NAVD 88
<i>Crew Chief</i> T. MOCHTY	<i>Convergence</i>	<i>Back Station I.D.</i> 11	<i>Grid Azimuth & Distance to back station</i> 229° 29'21.823" 1117.9(feet)	
<i>Established by Agency</i> WOOLPERT	<i>Scale Factor</i>	<i>Ahead Station I.D.</i>	<i>Grid Azimuth & Distance to ahead station</i>	

Ohio Professional Surveyor
in charge of monumentation

THOMAS F. MOCHTY

Oh. Registration No.
#7682

