

**FOR IMMEDIATE RELEASE**

Friday, February 16, 2024

CONTACT: Krysti Barnhill,  
[krysti@gorasor.com](mailto:krysti@gorasor.com), 513-739-1950



**Warren County Transportation Improvement District Invites Public to Review State Route 48 Roadway Improvement Study Results**

SOUTH LEBANON, OH – The Warren County Transportation Improvement District (WCTID) in partnership with the Ohio Department of Transportation (ODOT) invites residents, businesses and those who frequent the 1.5-mile stretch of State Route 48 between Ridgeview Lane/Saddle Creek Lane and Mason-Morrow-Millgrove Road to review current results from an ongoing feasibility study evaluating widening options for the roadway and bridges over the Little Miami River and Turtle Creek.

Those interested in reviewing the study results and providing feedback are welcome to attend the public open house on Wednesday, March 13, 6:30-8:30 p.m., at South Lebanon Elementary School, 50 Ridgeview Ln., in Maineville. The public is invited to stop in anytime within the two-hour open house. A virtual option for viewing the alternatives that are being recommended for consideration and providing feedback will be available and published closer to the meeting date. The materials available for viewing will be the same at the in-person open house and the virtual open house, as well as the opportunity for questions and comments.

“We welcome the public’s input on this exciting project,” said Neil F. Tunison, Warren County Engineer. “We realize there is major congestion and safety concerns along this corridor of SR 48 and the feasibility study is the first step towards addressing the issues. Public input is a critical component for the success of the project, and we encourage everyone to learn more about it and provide feedback.”

The project team, which has evaluated existing corridor conditions, will share alternatives being considered for widening of SR 48 to improve traffic flow and safety. They will be available to meet with the public to answer questions and receive feedback about the study and roadway improvement options.

The feasibility study assessed travel conditions along the section of SR 48 (listed above and pictured below) including four of the busiest intersections to understand the volume of traffic merging into SR 48 and where it’s going. They include Mason-Morrow-Millgrove Road, Dwire Road, Stone Brook Way, and Ridgeview Lane. Additionally, the study analyzed the Little Miami River and the Turtle Creek bridges to determine how to best improve travel time and decrease congestion on SR 48 as it crosses over them.

--more--

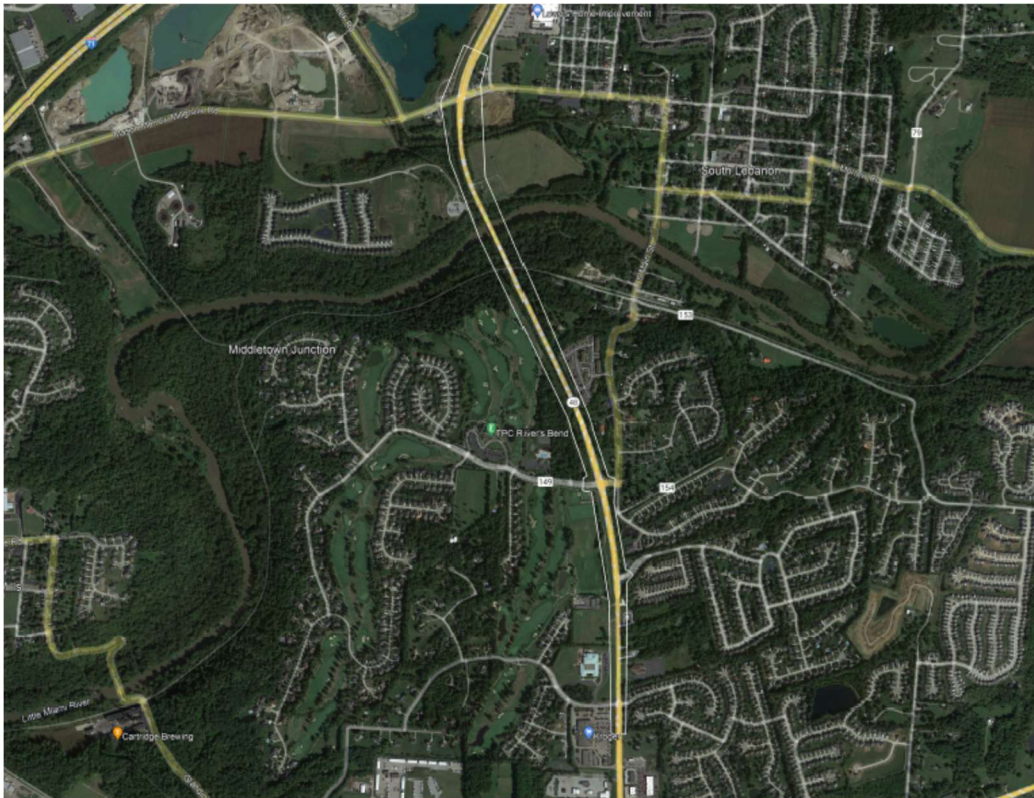
State Route 48 Roadway Improvement Study Results, page 2

Questions and comments may also be submitted to Dan Corey, Project Program Coordinator, WCTID, by email at [dan.corey@co.warren.oh.us](mailto:dan.corey@co.warren.oh.us), by phone (513) 431-1229, or by mail at 210 West Main St., Lebanon, Ohio 45036. All comments must be received by April 14.

Public participation is solicited without regard to race, color, sex, age, national origin or disability. The Ohio Department of Transportation is committed to providing access and inclusion and reasonable accommodation in its services, activities, programs and employment opportunities in accordance with the Americans with Disabilities Act (ADA) and other applicable laws. To request translation services or to request a reasonable accommodation due to a disability to submit questions and/or comments, please contact Taylor Webster, E.I., at [Taylor.Webster@dot.ohio.gov](mailto:Taylor.Webster@dot.ohio.gov) or (513) 933-6597 at least 15 days prior to the meeting or as soon as possible.

More information about the project is available at [www.wctid.us](http://www.wctid.us).

###



State Route 48 in South Lebanon between Ridgeview Lane/Saddle Creek Lane and Mason-Morrow-Millgrove Road, as shown above, is part of a feasibility study considering widening options for the roadway and bridges over the Little Miami River and Turtle Creek.