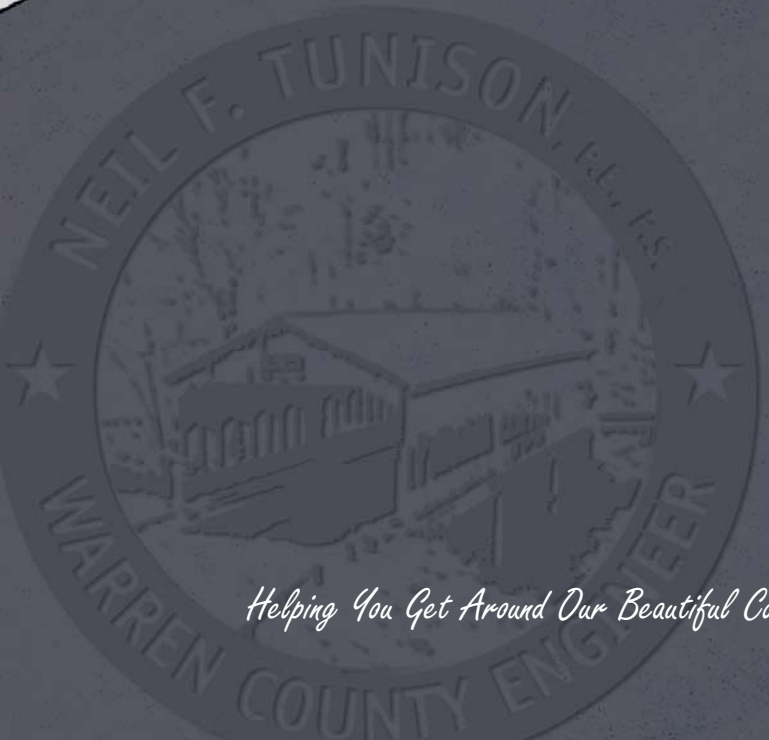


Warren County Engineer's Office  
2008 Annual Report



*Helping You Get Around Our Beautiful County!*

# Contents

Financial

Inside WCEO

Operations

Engineering Department

Highway Department

Tax Map Department

2009 Administrative Staff

Annual Report

## Ohio Revised Code 5543.02 Annual Report

The county engineer shall report to the board of county commissioners, on or before the first day of June in each year, the condition of the county roads, bridges, and culverts, and estimate the probable amount of funds required to maintain and repair or to construct any new roads, bridges, or culverts required within the county.

The engineer, on or before the first day of June in each year, shall make an annual estimate for the board of township trustees of each township, setting forth the amount required by the township for the construction, reconstruction, resurfacing, or improvement of the public roads within their jurisdiction. Such estimates shall relate to the year beginning on the first day of March next ensuing, and shall be for the information of the board of county commissioners and board of township trustees, in the making of their annual levies.

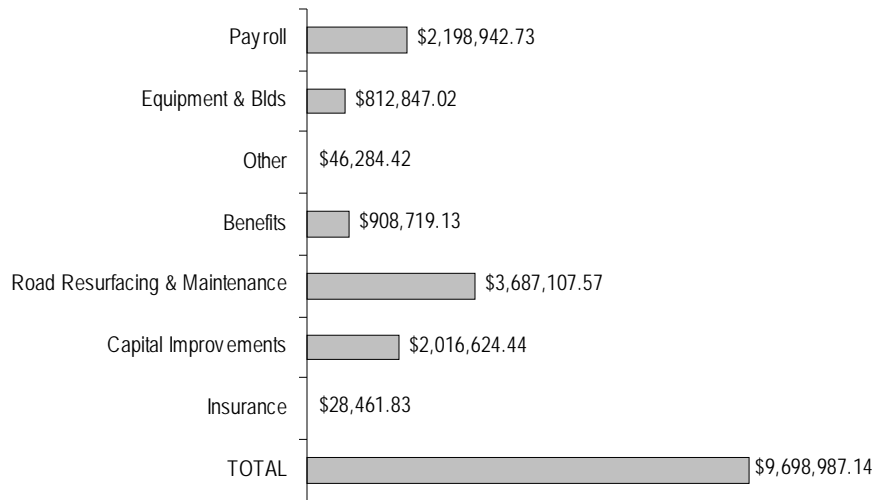
The engineer shall approve all estimates which are paid from county funds for the construction, improvement, maintenance, and repair of roads and bridges by the county. The engineer shall approve all estimates which are paid from township funds for the construction, reconstruction, resurfacing, or improving of roads under sections 5571.01, 5571.06, 5571.07, 5571.15, and 5573.01 to 5573.09 of the Revised Code. The engineer shall also approve all estimates which are paid from the funds of a road district for the construction, reconstruction, resurfacing, or improvement of the roads thereof under section 5573.21 of the Revised Code.

For the construction or repair of a bridge, the entire cost of which construction or repair exceeds fifty thousand dollars, the county engineer may request the director of transportation to review and comment on the plans for conformance with state and federal requirements. If so requested, the director shall review and comment on the plans.

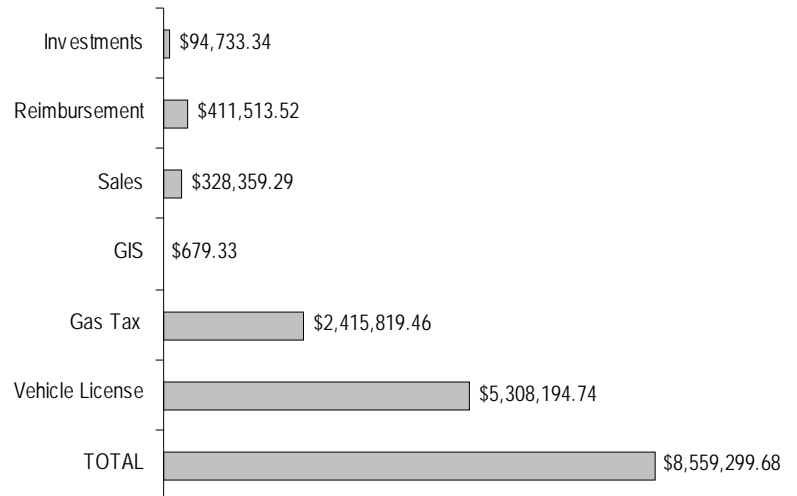
Effective Date: 06-30-1995; 03-29-2005

# Financial Highlights

## 2008 Expenditures



## 2008 Revenues





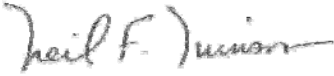
## Dear Citizens of Warren County,

It is my privilege to present to you the 2008 annual report for the Warren County Engineer's Office. This office maintains 268.53 miles of county roads and inspects and maintains 375 bridges on the county and township highway system. It also oversees operations of the Tax Map that is prepared for the County Auditor as well as oversee a stormwater management plan for five townships and two villages that satisfies conditions of the federally mandated National Pollution Discharge System Phase 2 Permit.

In 2008 we have undertaken and completed a variety of road and bridge construction projects amidst rising costs and short supplies of commodities and materials that we utilize in our service to the county. We have taken the opportunity to use a new and innovative construction technique on a bridge replacement project on Roachester-Cozaddale Road in Harlan Township utilizing geo-synthetic reinforced soil abutments that are just coming on the scene nationally. We have formed a snow removal policy communicating adjustments in our salt usage in response to a limited salt supply, resulting from last year's salt industry situation. We also are making significant changes in how we get important information regarding construction activities and public meetings through press releases and a soon-to-be-unveiled revamped website.

I hope you enjoy reading about our activities of the past year and those that we are planning for this year and 2010. I am only able to carry these out with the hard work and dedication of 51 employees in the Highway Department, Tax Map Office and Engineer's Office. I also appreciate the cooperation of the Board of County Commissioners, County Prosecutor's Office and other County offices, all of our Township Trustees and Fiscal Officers, municipalities, ODOT and you, the public.

Sincerely,



Neil F. Tunison, P.E., P.S.  
Warren County Engineer



Neil F. Tunison  
Warren County Engineer

## Inside WCEO

**Public Information** — During 2008 WCEO restructured a focus on public information, by making great efforts to provide information and make it more attainable to the citizens of Warren County. In March of 2008, the position of Public Relations Coordinator was created and filled. The goal in creating this position was to advance in the dissemination of all types of information for the County Engineer, which includes road closure announcements, news releases of various topics, reports, publications, the development of a new website, and the communication and soliciting of public involvement on all levels of the engineering and construction process.

**NEW Website and Book Map!!** — Our website has been in development throughout the year of 2008 and is set to launch early this year. The new website will allow for more effective and efficient updating of information on a more frequent basis. The Warren County Engineer's Office's goal is to utilize the website as frequently as possible for providing the most up to date information about all the goings on within every department, public education, and even transition to a more economical solution to sending out and acquiring information from our stakeholders. On the home page, visitor's to our website will find the "WCEO Help Center" which will be a one stop place for reporting concerns, finding out information on road closures, and finding permit forms and other electronic forms. The Warren County Engineer is responsible for annually providing a road map for the county. 2008 was the first year that WCEO provided an atlas style map. Since production the book map has been well received by the public.

**Stormwater Management—Phase II** —Warren County was identified as a Small Municipal Separate Storm Sewer System (MS4) community by the USEPA in 1999 and was granted a discharge permit in 2004. This year marks the beginning of a new five year term under a revised permit. The Warren County Engineer's Office administers the County's MS4 permit under the National Pollutant Discharge Elimination System (NPDES) commonly known as Phase II. The WCEO coordinates this permit for the Townships of Clearcreek, Franklin, Hamilton, Turtlecreek, and Union and the Villages of Maineville and South Lebanon. The WCEO's administration includes annual reporting, planning, and meeting the requirements of the permit by collaborating with other local agencies such as the Warren County Combined Health District and the Warren County Soil and Water Conservation District (WCSWCD).

The WCEO furthered this collaboration by hiring Caitlin Botschner in 2009 as a Phase II Liaison to work in both the WCEO and the WCSWCD offices. Her position and involvement with both offices allows for greater communication and coordination of the permit and its requirements. She works to ensure that permit requirements are met and provides reporting to the OhioEPA. She also works closely with the WCEO's GIS Technician to map the county's storm sewer system and home sewage treatment systems. The storm sewer system map was 80 percent complete as of 2008 and will be brought to a point where only new infrastructure is being added by 2011. Over 8,000 home sewage treatment systems have been mapped to date and this map will be brought to a point of currency during 2009.

In addition to continued mapping, the WCEO will pass new storm water regulations that include requirements for water quality this year. The regulations: Warren County Rules and Regulations for the Design of Storm Sewer and Storm Water Management Systems were revised from their 2003 version in 2008 and will be reviewed by the county prosecutor and presented to the Board of County Commissioners for adoption during 2009.

The WCEO also took steps to reduce its own storm water runoff in 2008 by installing a rain garden in front of the office. This garden receives rain water from the office's rooftop and allows it to percolate into the soil through its "bowl" shape and its native, deep-rooted plants. For more information about storm water and how Phase II affects you and our county please contact our office.



New website set to launch in April 2009.

Below:  
New 2008  
Book Map

## 2008 Staff Changes

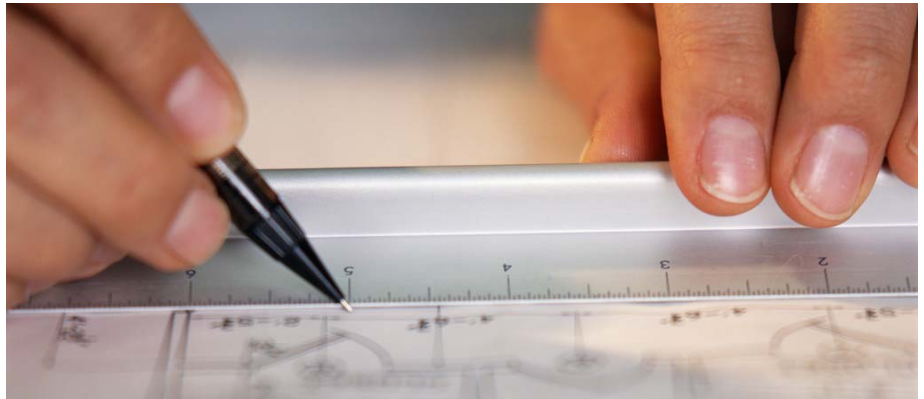
### Retired:

Jim McWhorter, Clerk, after 11 years

### New Hires:

Mike Toller, Clerk  
Savannah Smith, Public Relations Coordinator  
Caitlin Botschner, Phase II Liaison, GIS Technician

With 6 engineers on staff and a support staff of 13 other individuals, the **Warren County Engineer's Office** is able to serve the county through a variety of engineering, construction, and land record keeping services. The office's functions include preparation of road and bridge construction plans, bridge inspections, project planning, environmental research, funding appropriation, construction management, road and bridge maintenance, traffic studies, Geographic Information Service (GIS) management, government and public relations, and publication of the official County Map.



2008 served to be a busy yet paced year for the engineering staff. We had 8 major projects completed and have transitioned to over a dozen projects that are currently under construction or are in the final stages of development and are scheduled to begin this year.

## 2008 Completed Projects

### Roachester-Cozaddale Road Bridge #52-5.62

*New Bridge Technology Provides Economic Solutions*



Roachester-Cozaddale Road  
Bridge Construction—  
New Technology  
using GRS Abutments

The Roachester-Cozaddale Bridge — 0052-5.62 provides the only access to six residential homes on the other side of Second Creek. When the existing 56-foot two-span steel beam bridge with wood deck bridge needed replacement, a typically high-cost project, the Warren County Engineer's Office looked at that location as being an opportunity to utilize a new bridge design for a temporary bridge, one that not only was a better bridge but was faster to build and reusable.

This was possible through using geosynthetic reinforced soil (GRS) technology for abutments. Instead of a conventional bridge supported on a pile cap abutment, GRS technology uses alternating layers of compacted fill and sheets of geotextile reinforcement to provide support for the bridge. GRS abutments can be built with readily available material using common construction equipment. They are also extremely durable.<sup>1</sup>

In this project two bridges were built using the same technology. The first bridge was a temporary bridge to allow access for residents. The second bridge was the new permanent bridge reconstructed with GRS technology behind existing abutments and with pre-stressed concrete beams as the deck. The construction began in February of 2008 and was finished June 2008. The replacement was divided into three projects, funded by the Warren County Engineer, and totaled a cost of \$247,738.98.

<sup>1</sup> "Building the Bridge of the Future with GRS Technology" <http://www.tfrc.gov/focus/apr06/01.htm>, April 2006

### Dry Run Road Bridge #81-1.22

Rehabilitation of the bridge 81-1.22, carrying Dry Run Road over Dry Run in Union Township, was completed in September of 2008. The bridge is located on Dry Run Road between Snook Road and a dead end. It was a force account project that consisted of rehabilitating existing steel beams and replacing the existing wood deck. The cost was \$15,093.80 for the project and was funded by the Warren County Engineer.

### Grog Run Road Bridge #147-0.89

Replacement of the Grog Run Road Bridge 147-0.89 was completed in October 2008. The bridge is located on Grog Run Road between Harrison Road and Murdoch-Goshen Road over Grog Run in Hamilton Township. The existing concrete slab of the bridge was replaced with an aluminum box culvert. The project's costs were funded by the Warren County Engineer and totaled \$62,064.64.

### Schlottman Road Bridge #143-0.72

The Schlottman Road Bridge replacement was completed in September of 2008. The project consisted of replacing the deteriorated concrete slab bridge with a pre-cast concrete box. The bridge is located on Schlottman Road between SR 48 and a dead end in Hamilton Township. Smith Construction was awarded the project and the bridge was completed at a total project cost of \$119,549.50. The Warren County Engineer funded the project.

### Gustin-Rider Road Bridge #187-3.40

Rehabilitation of Bridge 187-3.40, carrying Gustin-Rider Road over Second Creek in Harlan Township, was completed in November of 2008. The bridge is located on Gustin-Rider Road between SR 123 and Whitacre Road. The project consisted of replacing the existing pre-stressed concrete box beams. The project cost \$106,743.79 using funds from the Warren County Engineer.

### Bunnell Hill Road and Patton Drive Intersection Improvement

The intersection of Bunnell Hill Road and Patton Drive, both roads maintained by Clearcreek Township, had a blind line of sight caused by a descending hill on Bunnell Hill Road, 150 feet north of Patton Drive. To correct the problem, the road was raised when a 6-foot by 6-foot culvert was replaced. Weidle Corporation of Germantown, Ohio was awarded the project and the intersection improvements were completed at a total project cost of \$377,125.87. Clearcreek Township funded the project that was designed and inspected by the Warren County Engineer.



Completed Bunnell Hill Road / Patton Drive Intersection Improvements Project

### Tylersville Road at Fireside Drive Intersection Improvement

The City of Mason and the Warren County Engineer teamed together to add a left turn lane on Tylersville Road at Fireside Drive. The project was completed in June of 2008 at a total cost of \$848,859.57. Construction was done by R. B. Jergens of Vandalia, Ohio. The Ohio Public Works Commission (OPWC) provided \$262,265.00 in funding matched by Mason's \$262,553.57 share and Warren County Engineer's \$324,041.00 share.

### Hendrickson Road Intersection Improvements

Safety improvements were completed in 2008 on two Hendrickson Road intersections, Hendrickson Road and Union Road and Hendrickson Road and Audubon Drive. The first project was realigning Hendrickson Road at the Union Road intersection to improve sight distance and reduce turning movement conflicts. The project was completed in the month of June. The second Hendrickson Road intersection improvement was to correct a sight distance problem for vehicles turning into and out of Audubon Drive in Turtlecreek Township. The hill to the west of the intersection was lowered for a more gradual grade entering the intersection. Both Hendrickson Road intersection improvements were completed in October and were constructed by SK Construction of Middletown. The projects were combined with a final total project cost of \$841,312.74 with the following breakdown:

Audubon Drive	Union Road
Ohio Public Works Commission:	Warren County Commissioner's Highway Safety Fund:
\$13,948.36	\$376,120.22
Warren County Engineer:	
\$352,631.78	
City of Middletown:	
\$98,612.38	

## Current and Future Projects

### Irwin-Simpson Road Realignment

Currently Irwin-Simpson Road does not line up at Wilkens Blvd. The traffic flow must utilize Wilkens Blvd. to continue on Irwin-Simpson Road. The realignment project is being developed to realign 1400 feet of Irwin-Simpson Road from Nottingham Way to Polo Drive and is estimated to cost \$2,250,000. A portion of existing Irwin-Simpson Road west of Wilkens Blvd. will be abandoned and a cul-de-sac 350 feet west of Wilkens Blvd. will be constructed. The new Irwin-Simpson Road and Wilkens Blvd. intersection will be signalized. The project is to be funded through a Deerfield Township TIF and shares from other deferred improvements. The design consultant on the project is American Structurepoint. The project is funded by the Warren County Engineer. Currently the project is in the right-of-way acquisition process and, upon completion, advertisements for bid will be submitted. Construction is set for the summer and fall seasons of this year.



Design for Irwin-Simpson Road Realignment

### SR 73 and Township Line Road Intersection Improvements

There is currently a large dip in the road on SR 73 east of the Township Line Road intersection, a high severe accident location. To correct this, the road profile is being raised 11-12 feet and is estimated to cost \$1,300,000. The project is being funded by a Ohio Public Works Commission (OPWC) Grant of \$416,000 and is matched by the Warren County Engineer. The consultant on the project is Greschem-Smith. The design phase is essentially complete. The county engineer is actively acquiring right-of-way and working on utility relocation. Advertisements for bid are expected within April of this year. Construction is anticipated for June through August of this year.

### Drake Road Widening

The skewed three-way intersection of Drake Road at Old SR 122 will be realigned to have a right angle. In addition, the alignment of Drake Road will be adjusted and widened, from the intersection, south to the Turtlecreek / Clearcreek Township Line. The project is estimated to cost \$328,000, which will be funded by a Ohio Public Works Commission (OPWC) Grant, the Warren County Engineer, and Clearcreek Township. It has been designed by the Warren County Engineer's Office. Construction is anticipated to begin in 2010.



### Socialville-Fosters Road and Columbia Road Intersection Improvements

Improvements at this highly congested intersection would involve adding left-turn lanes on Socialville-Fosters Road. The signals will be adjusted to include protected left-turns on the north and south approaches. Minor profile adjustments will also be made to correct some uneven pavement. The project's total cost is an estimated \$900,000. The project will be funded by the Warren County Commissioner's Highway Safety Fund. The consultant on the project is PE Group. Advertisement for construction bids will be submitted when the right-of-way acquisition process is complete. The project is scheduled to begin this summer and be completed this fall.

### Western Row Road Bridge Replacement

Bridge 54-4.17 is in need of replacement as the existing deck and beams are deteriorating. The bridge is set to be replaced by removing the existing 24 foot wide deteriorated steel beam/ concrete deck with a 28 foot wide steel beam/ steel deck utilizing the existing concrete abutments. The project is estimated to cost \$225,000. The project will be funded by the Warren County Engineer. Advertisements for bid will be submitted when the right-of-way acquisition process is complete. Construction could be as early as this autumn or early next year.



Wilmington Road bridge beam showing signs of deterioration.

### Wilmington Road Bridge Rehabilitation

Bridge 7-4.65 is in need of rehabilitation as the existing pre-stressed concrete box beams are deteriorating. The planned improvements for the Wilmington Road Bridge involves the replacement of the existing 20 foot wide deteriorated pre-stressed concrete box beams with 24 foot wide prestressed concrete box beams with a concrete composite deck. The estimated total project cost is \$850,000. Entran is the consultant on the project which is being funded by the Warren County Engineer. Advertisements for bids will be submitted upon acquisition of right-of-way. Construction is scheduled for June through November of this year.

### Mason-Montgomery Road Northbound Add Lane

This project is located within one of the most congested areas of southwest Ohio. The project will include the widening of northbound Mason-Montgomery Road along the east side between Fields-Ertel Road and Parkway Drive in order to provide an additional northbound lane. The existing pavement markings between the I-71 northbound off ramp and Fields-Ertel Road will be modified to allow it to function as a combination "through and right turn" lane.

The total estimated cost of the project is \$1,604,500. The project consultants is Kleingers and Associates, Inc. The project is funded by a Ohio Public Works Commission (OPWC) Grant, the Warren County Engineer, and the Hamilton County Engineer. The project design is essentially complete pending a traffic study review by the Ohio Department of Transportation (ODOT) and utility relocation. The advertisement for construction bids are anticipated for this summer with construction completed by November of this year.

### Bethany Road Improvements

With an average daily traffic count of 9000 vehicles per day, up from 1,000 vehicles per day ten years ago, Bethany Road has become functionally obsolete. The project was identified as a need in the Southwest Warren County Transportation Study (SWWCTS). The improvement project limits are from Butler-Warren Road to the City of Mason Corp. Limit on Bethany Road. The improvements proposed involve widening the road to add a middle turn lane. The road will be realigned and the elevation modified to improve sight distance. A portion of the project will also involve replacing the bridge just east of Pinnacle Lane. The total estimated cost for the project is \$6,300,000. Funding is coming from both the Warren County Engineer and the Ohio Department of Transportation (ODOT). The design consultant on the project is KZF Design who is assisting in the planning, environmental, and preliminary engineering phase at a cost of \$487,339. The project is slated for Summer 2011 – Fall 2012.

### Butler-Warren Road Improvements

Butler-Warren Road is currently two-lanes and insufficient for its function. Traffic flows have already developed to severe congestion during certain period of times daily. This project was identified as a need in the Southwest Warren County Transportation Study (SWWCTS). The proposed project consists of five lanes with a median two-way left turn lane from Tylersville Road to Heritage Club Drive at an estimated total cost of \$11,200,000. The funding for the project is provided jointly by the Butler County Engineer and the Warren County Engineer. The consultant on the project is TranSystems. And the project is in the planning, environmental and preliminary engineering phase with an estimated construction period in Spring 2011 – Summer 2013.

### Greentree Road Improvements, Phase 2

Currently Greentree Road, between Shaker Run Blvd. and Meadow View Lane, has a large hump in the road causing poor sight distance. Also, there are currently two culverts that have deteriorated and are in need of replacement. The planned improvements involve replacing the two 1931 bridge/culvert structures, make vertical and horizontal profile improvements, and widen Greentree Road to 3-lanes. The project is estimated to cost \$ 800,000 and is being funded by the Warren County Commissioner's Highway Safety Fund. The consultant for the project is Bayer & Becker, Inc. who are currently assisting in the project in design. Advertisements for bid will be submitted upon completion of design and the acquisition of permits and/or right-of-way. The project is scheduled for the summer of this year.

### Fields-Ertel Road and Columbia/Lebanon Road Intersection Improvements

Currently the intersection of Fields-Ertel Road and Columbia Road (Lebanon Road in Hamilton County) is frequently congested and a high accident area. To improve level of service, the Warren County Engineer's Office and the Hamilton County Engineer's Office are partnering to widen the travel lanes, update the traffic signal system, and add turning lanes. Both the Warren County Engineer and the Hamilton County Engineer are funding the \$1,800,000 for the intersection improvements. The project is currently in design phase with EMH&T as the consultant and construction is not yet scheduled.

*"We're facing the biggest construction season that our office has experienced in my 14 years of serving with Warren County!"*

Kurt Weber  
Chief Deputy Engineer

## Columbia and Mason-Morrow-Millgrove Bridge/ Intersection Improvements

The intersection is functionally obsolete for the high truck volume entering the Lebanon Commerce Park. The project will involve realigning the intersection, reconstructing the bridge, widening Columbia Road to 3-lanes, and adding a left turn lane on Mason-Morrow-Millgrove Road for turning traffic headed north on Columbia Road. The total project cost is estimated at \$1,414,000. Funds are being allocated from a Ohio Public Works Commission (OPWC) Grant, the Warren County Engineer, and the City of Lebanon. The project is in design phase with Burgess-Niple as the consultant. Advertisements for bid will be submitted upon completion of plans, acquisition of permits, and/or right-of-way. The project's construction period is scheduled for the summer and fall seasons of 2010.

## US 22-3 Widening Project

The portion of US 22, also known as 3C Highway, is currently being widened in Deerfield Township and had substantial completion in late autumn of 2008. Resurfacing this spring will essentially conclude the last of a three phase project that began in 2006 at I-275 and extended to north of Kemper Road in Hamilton County. In Deerfield Township the project involved the widening of US 22 to five lanes with paved shoulders from Fields-Ertel Road to Old Mill Road (1/2 mile north of Columbia Road) and dropping to three northward to Old 3C Highway near the Fosters Viaduct. Although this is a project funded through the Ohio Transportation Review Advisory Council (TRAC) using Federal Highway Aid, the \$4,000,000 local share was split by Deerfield Township and Warren County (The County Commissioners' Highway Safety Fund and the County Engineer). The total project including right-of-way will cost \$35,000,000 with the Warren County portion being \$19,820,000.



The widened US22/SR3, with construction in the final phase.

## Permits Summary

The Warren County Engineer's Office issues permits for right-of-way work, permits for over-sized trucks to travel on township and county roads, permits for driveways and road frontage, and issues new addresses.

Before work may be performed in public right-of-way on all township and county roads, a permit must be issued. When a new address is issued, the permits supervisor forwards the new address to the building department (if necessary), emergency services, and the post office.

In a subdivision plat with streets having curb and gutter, addresses are pre-assigned and driveway permits are not necessary.

The following are tables showing the average number of permits issued since 2000 and the summaries of 2006, 2007, and 2008:

### Right-of Way Permits

	An Average of 2000-2005	2006	2007	2008
Clearcreek	21.5	15	32	23
Deerfield	54.1	68	47	43
Franklin	13.3	15	8	21
Hamilton	40.6	28	38	21
Harlan	35.2	20	24	23
Massie	7.3	4	2	4
Salem	11.5	10	10	17
Turtlecreek	32.5	24	40	31
Union	10	1	11	2
Washington	20	17	11	11
Wayne	22.5	11	22	6
<b>Total</b>	<b>268.6</b>	<b>213</b>	<b>245</b>	<b>202</b>

### Driveway/Address/Piped Frontage\*

	An Average of 2000-2005	2006	2007	2008
Clearcreek	175.2	157	95	75
Deerfield	17.2	17	9	11
Franklin	40.6	20	14	5
Hamilton	51.3	39	30	25
Harlan	56	36	30	17
Massie	9.3	8	6	4
Salem	27.5	19	21	12
Turtlecreek	91.8	68	59	36
Union	16.2	13	9	6
Washington	53.2	38	21	11
Wayne	46.7	41	44	32
<b>Total</b>	<b>585</b>	<b>456</b>	<b>338</b>	<b>234</b>

\* curb and gutter streets not included

The Highway Department fulfills basic road and bridge maintenance for 268.53 miles of road, 375 bridges, and 1,380 culverts. Included in this are functions such as performing speed studies, installing road signage, detour routing, traffic signals, maintenance mechanics, building and grounds maintenance. One dimension of the department is the Highway Maintenance Facility which has (1) Garage Superintendent and (3) full time Mechanics, (1) Building and Grounds Maintenance personnel, (1) Parts Coordinator, and (1) Highway Clerk. The other dimension of the department is the Highway Maintenance Personnel (Road Crew) which consists of (1) Deputy of Operations, (1) Asst. Deputy of Operations, (3) Foreman, and the road crew employees.

The road crew makes up the majority of the Highway Dept. This group of employees is responsible for the maintenance of the existing county highway system. They are required by law to maintain a CDL operator's license. Types of duties performed---Tree Trimming, Brush Cutting, Guardrail Work, Ditch Cleaning, Culvert Installation and Replacement, Setting up Work Zones, Roadside Mowing, Shoulder Repair, Bridge Installation and Repair, New Road Construction, and Emergency Situations.

Our employees maybe called upon for emergency situations, storm clean-up, trees down, flooding, and other road hazards. Snow and Ice Control is our most challenging weather event. It is the job of the Highway Department to make travel on our highway system a safe commute, regardless of weather conditions.



Left: County Snow Plows in garage ready for snow fighting.

Below: Fosters-Maineville Road being plowed after a winter storm.



## Winter Season Summary

The Highway Department's primary function during winter months is keeping Warren County roadways clear of snow and ice. There were 20 snow occurrences during the 2007-2008 winter season that required 3,524 hours of overtime by our road crew and consumed 7,294.25 tons of salt to clear the roads. The entire season cost the county \$401,506.50.

In response to a limited salt supply, resulting from the 2008 salt industry situation, WCEO made adjustments to salt usage during snow and ice cleanup for the 2008-2009 winter season. Sodium Chloride (salt) was mixed with finely crushed granular material (grits) for use on the roads. The season, up to date, has totaled 19 snow occurrences with salt/abrasive usage totaling 3,843 tons, overtime totaling 1,679.75 hours, costing the county \$251,653.90.

## Wind Storm

Hurricane force winds on September 14, 2008 resulted in several damaged and missing signal lights and flashers, downed trees, downed power lines, and large amounts of vegetative debris scattered throughout the 268 miles of road the Engineer has jurisdiction over in Warren County. There were over 996 hours of labor invested into storm clean-up at a total expense of \$51,500.41. Neil F. Tunison, Warren County Engineer, was able to apply for a FEMA Grant and was awarded \$38,625.00 to offset clean-up costs.



## Resurfacing

Each construction season the Highway Department works to improve and maintain different sections of county roadway by replacing old culverts and resurfacing.

### 2008 Resurfacing

Roads that were resurfaced in 2008:

Phase 1 cost: \$ 971,711.36  
Phase 2 cost: \$ 1,160,044.90

Road Name	Start Location	End Location	Mileage
Union Road (CR 33)	Middletown City Corp. Line	Shaker Road (CR 48)	2.216
Corwin Road (CR 47)	Gard Road (TR 233)	Middletown Road (CR 30)	2.621
Manchester Road (CR 104)	Tewart Road (TR 1252)	Union Road (CR 33)	0.705
Township Line Road (CR 134)	Address #7562	Lytle Road (CR 28)	1.002
Mason-Montgomery Road (CR 21)	Deerfield Township Line	Hamilton Road (CR 13)	1.040
Socialville-Fosters Road (CR 32)	Address #3440	Bridge #32-5.14	1.474
Zoar Road (CR 153)	Cozaddale-Murdoch Road (CR 26)	Fosters-Maineville Road (CR 23)	1.503
Butterworth Road (CR 156)	Loveland City Corp. Line	Fosters-Maineville Road (CR 23)	2.953
		Total Mileage =	13.514

### 2009 Resurfacing

Roads scheduled to be resurfaced in 2009:

Phase 2 cost estimate: \$ 971,711.36

Road Name	Start Location	End Location	Mileage
Wilmington Road (CR 7)	Address #1124	Nixon Camp Road (TR 83) Left	3.590
Oregonia Road (CR 12)	Lebanon City Corp. Line	Address #4424	4.682
Greentree Road (CR 20)	Shaker Road (CR 48)	SR 741	0.406
Lytle Five Points Road (CR 46)	Kenrick Road (CR 133)	Lytle Road (CR 28)	0.518
Shaker Road (CR 48)	Power Lines	Manchester Road (CR 104)	1.283
Butler-Warren Road (CR 2)	Brewer Road (CR 66)	Hamilton Road (CR 13)	1.025
Mason-Morrow-Millgrove Road (CR 38)	Stubbs Mill Road (CR 35)	Halls Creek Road (TR 84)	1.170
Middleboro Road (CR 45)	Bottom of Hill	Top of Hill	0.137
Dallasburg Road (CR 51)	Morrow-Cozaddale Road (CR 43)	Pleasant-Renner Road (TR 172)	0.201
Dallasburg Road (CR 51)	Whitegate Drive (CR 277)	Price Place (TR 1385)	0.357
Brewer Road (CR 66)	Butler-Warren Road (CR 2)	Mason-Montgomery Road (CR 21)	2.130
Strout Road (CR 207)	Mason-Morrow-Millgrove Road (CR 38)	Bike Path	0.102
		Total Mileage =	15.601

## New Equipment

The Warren County Highway Department's Garage staff maintain and repair the fleet of vehicles and equipment. Part of the annual transition of maintaining an effective fleet of equipment involves replacement of old equipment. The year 2008 required the replacement of the 1989 Gradall that we had. This unit is used for various jobs throughout the year: cleaning ditches, putting in culverts, and almost any type of digging. A "thumb" attachment was also purchased for the Gradall that is very useful for picking up downed trees or tree limbs due to high winds or anything that is too heavy to lift by hand. The following is a complete list of the year's purchases.

ID	Model Year	Make	Model	Description	Purchase Date	Price
1	2008	IMPALA	LS SEDAN	SILVERSTONE	03/03/08	\$15,984.50
2	2008	IMPALA	LS SEDAN	SLATE METALLIC	03/03/08	\$15,834.50
7	2008	Ford	F-150 4X4	EXT. TRUCK	03/11/08	\$20,402.00
8	2008	Ford	F-150 4X4	EXT. TRUCK	03/11/08	\$20,307.00
9	2008	Ford	F-250 Super-duty	Gold EXT 4x4 pickup Truck	04/09/08	\$22,389.64
56	2008	GRADALL	XL3100III	GRADALL ID # 3120000131	03/11/08	\$200,000.00
135	2008	Gradall	8045-5006	FIXED THUMB GRAPPLE	11/06/08	\$11,690.00
67	2008	Chevrolet	3500 EXT. CAB	TRUCK CHASSIS	05/22/08	\$20,247.00
138	2008	STIHL	MS260P	CHAINSAW	11/05/08	\$415.96
315	2008	STIHL	MS280	CHAINSAW	06/18/08	\$359.96
391	2008	STIHL	MS280	CHAINSAW	09/15/08	\$383.96
259	2008	CASE	721E	LOADER	02/25/08	\$134,041.00
						\$462,205.00



The new Gradall purchased in March of 2008.

**Functions**

With respect to the Ohio Revised Code, the function of the **Tax Map Department** includes the following:

1. Per O.R.C. 315.25 we make and keep accurate record of surveys of land and road lines.
2. Per O.R.C. 315.251 we determine if survey plats and descriptions satisfy the minimum for boundary surveys pursuant to Chapter 4733.
3. Per O.R.C. 315.27 we make and keep up indexes of records.
4. Per O.R.C. 317.34 we approve subdivisions for the office of Recorder.
5. Per O.R.C. 319.203 we adopt standards of conveyance and ensure compliance.
6. Per O.R.C. 709.031(A) we prepare a report for petitions of annexations.
7. Per O.R.C. 713.26 we assist the regional planning commission.
8. Per O.R.C. 5311.05 we review condominium declarations.
9. Per O.R.C. 5713.09 we make, correct, and keep up a complete set of tax maps.

Also, the tax Map Department identifies all legal descriptions by parcel number for identification in the Auditor's office and for indexing in the Recorder's office. We assist the public and other government agencies in utilizing the records we keep on file.

**Accomplishments**

- Captured 14% of the paper tax map data into digital GIS data.
- Archived all of the current paper tax maps utilizing the scanner.

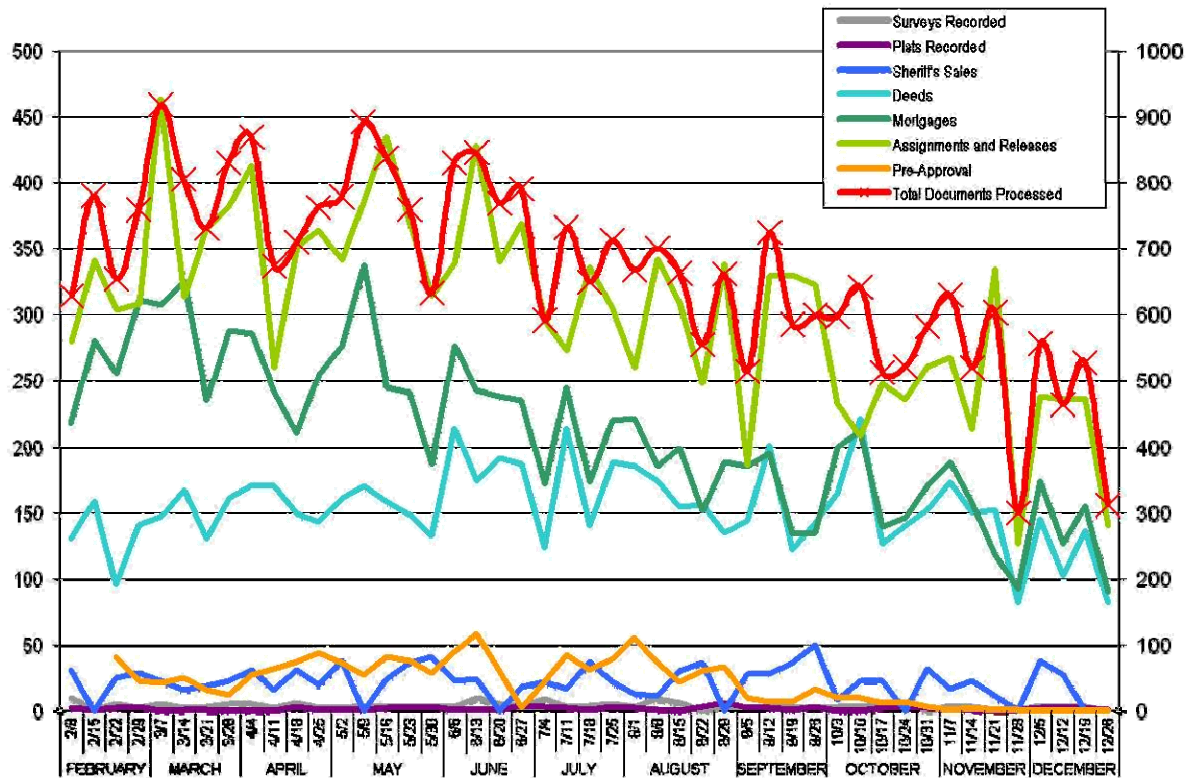
**Developments**

- Revised and adopted the Conveyance Standards.
- Acquired a new scanning/plotting system and implemented a price reduction for copies.

**Statistics**

Major documents processed:	
Deeds	8,058
Mortgages	11,109
Assignments and releases	16,065
Total documents processed	39,813
Surveys filed	187
Plats filed	95
Sheriff's precipe's processed	1080

**Work Volume Trends for 2008**



**Plans for 2009**

- Capture an additional 54% of the paper tax map data into digital GIS data for a total of 68% of the total data.
- Repair and archive all of the 1977 tax maps utilizing the scanner.
- Archive all of the current tax maps utilizing the scanner.
- Complete the index of all tax map department files in the OnBase system.

## Engineering

Neil F. Tunison, P.E., P.S., *Warren County Engineer*  
Kurt Weber, *Chief Deputy Engineer*  
Roy Henson, *Bridge Engineer*  
Dave Mick, *Planning & Design Engineer*  
Chuck Petty, *Assistant County Engineer*  
Vickie Trimbach, *Assistant County Engineer*  
Mark Dawson, *Permits Supervisor*  
Jason Fisher, *Subdivision & Drainage Review*  
Jeff Jones, *General Inspector*  
Mark Stephenson, *Bridge Inspector*  
Phil Ginther, *Subdivision Inspector*  
Jeff Pendleton, *Assistant Bridge Design*  
Sheliah Pickens, *Planning & Design Assistant*

Neil.Tunison@co.warren.oh.us  
Kurt.Weber@co.warren.oh.us  
Roy.Henson@co.warren.oh.us  
David.Mick@co.warren.oh.us  
Charles.Petty@co.warren.oh.us  
Vickie.Trimbach@co.warren.oh.us  
Mark.Dawson@co.warren.oh.us  
Jason.Fisher@co.warren.oh.us  
Jeff.Jones@co.warren.oh.us  
Mark.Stephenson@co.warren.oh.us  
Phil.Ginther@co.warren.oh.us  
Jeff.Pendleton@co.warren.oh.us  
Sheliah.Pickens@co.warren.oh.us

## Engineer's Office Support Staff

Sharon Lawhorn, *Administrative Assistant*  
Rhonda Greely, *Secretary*  
Mary Sturgis, *Secretary*  
Ann Kisela, *GIS Technician*  
Caitlin Botschner, *Phase II Liaison, GIS Technician*  
Bobbi Apking, *Records Clerk*  
Savannah Smith, *Public Relations Coordinator*

Sharon.Lawhorn@co.warren.oh.us  
Rhonda.Greely@co.warren.oh.us  
Mary.Sturgis@co.warren.oh.us  
Ann.Kisela@co.warren.oh.us  
Caitlin.Botschner@co.warren.oh.us  
Bobbi.Apking@co.warren.oh.us  
Savannah.Smith@co.warren.oh.us

## Highway Department

Jim Apking, *Highway Superintendent*  
Lee Lewis, *Assistant Highway Superintendent*  
Elbert Allen, *Clerk*  
Mike Toller, *Clerk*  
Greg Carmack, *Traffic Supervisor*

Jim.Apking@co.warren.oh.us  
Lee.Lewis@co.warren.oh.us  
Elbert.Allen@co.warren.oh.us  
Mike.Toller@co.warren.oh.us  
Greg.Carmack@co.warren.oh.us

## Tax Map Department

Bob Fox, *Supervisor*  
Paul Galyen, *Group Leader (GIS)*  
Suzanne Combs, *Group Leader (Technicians)*  
Kelly Walker, *GIS*  
Dale Tuemler, *Technicians*  
Dianne Berryman, *Technicians*

Robert.Fox@co.warren.oh.us  
Paul.Galyen@co.warren.oh.us  
Suzanne.Combs@co.warren.oh.us  
Kelly.Walker@co.warren.oh.us  
Dale.Tuemler@co.warren.oh.us  
Dianne.Berryman@co.warren.oh.us

## 2009 Administrative Staff

### Warren County Engineer's Office (513) 695-3301

105 Markey Road  
Lebanon, Ohio 45036

### Warren County Highway Department (513) 695-3329

105 Markey Road  
Lebanon, Ohio 45036

### Warren County Tax Map Department (513) 695-1190

460 Justice Drive  
Lebanon, Ohio 45036



